

NTM_{BR}

Blackened steel finish

- Material

Screw : steel (class 10.9)

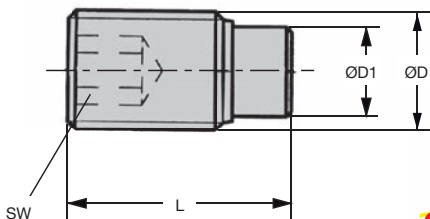
Tip : brass

Info

- The tip is fitted into the screw.
- These screws are designed to lock or gently hold screws, axles, shafts or other components with a high quality surface finish.



Brass tip



INCREASED STOCK

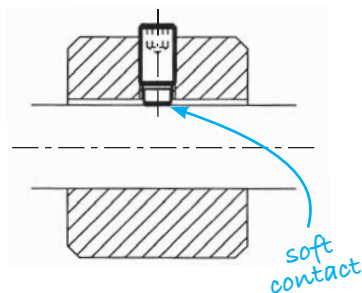
DISCOUNTS

Qty	1+	20+	30+	40+	60+	100+	300+
Disc.	List	-10%	-15%	-20%	-25%	-45%	On request

Part number	ØD	ØD1	L	SW	Stock*	Price each 1 to 19
NTM4-6/BR	M4	2,5	6,5	2	✓	5,88 €
NTM4-10/BR	M4	2,5	10,5	2	✓	5,88 €
NTM4-16/BR	M4	2,5	16,5	2	-	6,07 €
NTM4-30/BR	M4	2,5	30,5	2	-	8,17 €
NTM4-40/BR	M4	2,5	40,5	2	-	8,32 €
NTM5-8/BR	M5	3	8,5	2,5	-	5,28 €
NTM5-12/BR	M5	3	12,5	2,5	✓	5,28 €
NTM5-20/BR	M5	3	20,5	2,5	✓	5,53 €
NTM5-30/BR	M5	3	30,5	2,5	✓	8,32 €
NTM5-40/BR	M5	3	40,5	2,5	-	8,43 €

*Depending on availability - Dimensions in mm

INCREASED STOCK



Part number	ØD	ØD1	L	SW	Stock*	Price each 1 to 19
NTM6-11/BR	M6	4,0	11,5	3	✓	5,28 €
NTM6-17/BR	M6	4,0	17,5	3	✓	5,28 €
NTM6-26/BR	M6	4,0	26,5	3	✓	5,53 €
NTM6-41/BR	M6	4,0	41,5	3	-	8,49 €
NTM6-51/BR	M6	4,0	51,5	3	-	8,63 €
NTM6-61/BR	M6	4,0	61,5	3	✓	8,67 €
NTM8-12/BR	M8	5,5	12,0	4	✓	5,48 €
NTM8-22/BR	M8	5,5	22,0	4	-	5,48 €
NTM8-32/BR	M8	5,5	32,0	4	✓	5,63 €
NTM8-52/BR	M8	5,5	52,0	4	-	8,79 €
NTM8-62/BR	M8	5,5	62,0	4	✓	8,92 €
NTM8-82/BR	M8	5,5	82,0	4	-	8,98 €
NTM10-14/BR	M10	7,0	14,0	5	✓	6,23 €
NTM10-18/BR	M10	7,0	18,0	5	-	6,23 €
NTM10-27/BR	M10	7,0	27,0	5	-	6,41 €
NTM10-37/BR	M10	7,0	37,0	5	-	6,77 €
NTM10-52/BR	M10	7,0	52,0	5	-	8,92 €
NTM10-62/BR	M10	7,0	62,0	5	-	9,08 €
NTM10-82/BR	M10	7,0	82,0	5	✓	9,23 €
NTM12-18/BR	M12	8,5	18,5	6	-	6,92 €
NTM12-22/BR	M12	8,5	22,5	6	-	6,92 €
NTM12-32/BR	M12	8,5	32,5	6	-	7,48 €
NTM12-42/BR	M12	8,5	42,5	6	-	8,07 €
NTM12-52/BR	M12	8,5	52,5	6	-	9,08 €
NTM12-62/BR	M12	8,5	62,5	6	-	9,27 €
NTM12-82/BR	M12	8,5	82,5	6	✓	9,53 €

*Depending on availability - Dimensions in mm

Our other products



OPFL_OPPM

Numerical counter accessories, Locking clamp



MFBS

Stainless steel flexible bellows coupling, Stainless steel - with se...



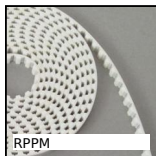
UGH25

H Type Guide units, For Ø25 actuators



SBF

Sealed flange bearing unit for Food Industry, cover



RPPM

RPP type belt per metre, RPP8 Steel cored polyurethane



GTC

Belt tensioner, For standard applications



SLBWSS

Indexing plunger, weldable, Weldable - Stainless steel



PLM-20SC

Threaded cylindrical magnet, With threaded hole



SCH

Horizontal hook toggle clamp, Horizontal Hook clamp - stainless steel



HTD14M_55

HTD Heavy duty timing pulley, HTD14 Cast



HLC19

Right angle spiro bevel gearbox, Up to 43Nm



GCH

Linear ball slide - Stainless steel balls, Chariot - from 514 N to 1...

Complementary products



NTMdl

Set screw delrin tip, Delrin-point



NTM

Nylon tipped set screw, Nylon-point