

# Right angled support clamp

Sta Stock

## NSP

## Easy to mount and adjust

- Support clamp for use with 8 mm T slots
- Material:  
stainless steel

### Application

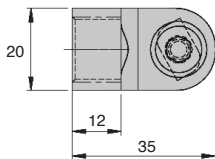
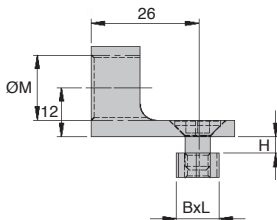
- Supporting sensors, connecting tubes when assembling small structures

### Accessories

- To be used with **MBF** sleeves and **APBC** rods



Suitable for food industry use



### DISCOUNTS

Qty	1+	5+	10+	20+
Disc.	List	-5%	-10%	On request

Part number	For rod ØA	Thread ØM	H	B	L	Used with sleeve	Stock*	Price each 1 to 4
NSP8-12	8	M12x1,5	0-10	8	13	MBF8-12	✓	16,98 €
NSP10-14	10	M14x1,5	0-10	8	13	MBF10-14	✓	17,20 €
NSP12-16	12	M16x1,5	0-10	8	13	MBF12-16	✓	17,49 €

\*Depending on availability - Dimensions in mm

## Our other products



GP  
Spring loaded toggle latch, Standard (GP22-GP23)



AT5P\_AT10P  
Connecting plate for AT type timing belts, AT10



NCT  
Square tube connector, Fixed angle



BPM  
Slotted spring plunger with ball tip, Steel



BDP1R  
Adjustable support arm, Single clamp



KBS\_UU  
Stainless steel closed precision linear bearing, Precision - stainless steel...



CHCSS  
Socket headed screw, Stainless steel - A2



CHAPAMss  
Weld-on hinge with flat end, Stainless steel or Aluminium



RPCplss  
Swivel castor with plate, Stainless steel - Polyamide



VRSSss  
Male swivelling lifting rings stainless steel, Male swivelling - stainless steel...



VQTplqp  
Quarter-turn clamp lock - Clamping plate, Wall mounting



ADL\_F  
Female eye bolt conforms to DIN582, Stainless steel

## Complementary products



MBF  
Threaded blocking clamp, Threaded locking clamp



APBC  
Circular rod, Round rod