

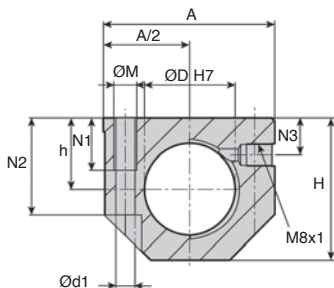
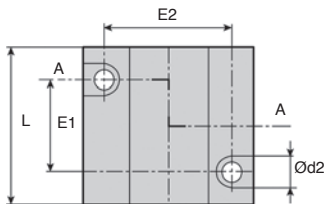
Standard linear bearing housing **Alu** **Stock**

NSB For KB, TK and RJUM bearings

- Housing for closed bearing
- Bearing not supplied
- Material : Aluminium

Options

- Compatible with KB, TK and RJUM ranges



DISCOUNTS

Qty	1+	5+	10+	25+
Disc.	List	-6%	-12%	On request

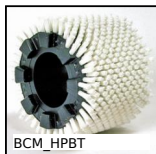
Part number	For shaft		H	h +0.01/- 0.02	L +0.3	N1	N2	N3	E1 +0.2	E2 +0.2	Ød1	Ød2	ØM	Stock*	Price each 1 to 4	
	Ød	ØD														
NSB12	12	22	35	18	43	39	13	25	10	23	32	4,2	8	M5	✓	38,55 €
NSB16	16	26	42	22	53	43	13	30	12	26	40	5,2	10	M6	✓	43,77 €
NSB20	20	32	50	25	60	54	18	34	13	32	45	6,8	11	M8	✓	47,94 €
NSB25	25	40	60	30	78	67	22	40	15	40	60	8,6	15	M10	✓	60,45 €
NSB30	30	47	70	35	87	79	22	48	16	45	68	8,6	15	M10	✓	69,87 €

*Depending on availability - Dimensions in mm

Our other products



SUA4
Single chain supplied by the metre, Steel



BCM_HPBT
Modular cylindrical brush, PBT polyester bristles



SLB
Indexing plunger, steel class 5.8



APBC
Circular rod, Round rod



HW_HT
Half-rail guide, Rail



UCF
Cast iron flange bearing unit, Cast iron



INO
Internal gear, Machined plastic (delrin)



PGR
Folding revolving handle for handwheel, Folding



BLHB40
Right angled gearbox, bored shafts, up to 10.3 Nm



FDS
Flexible drive shaft, Masterflex® Steel, with PVC casing



RHTtcss
High Temperature Castor, up to 200kg



BPFLss
Pressed stainless steel flange bearing, Stainless steel

Complementary products



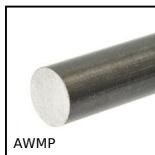
KB_UU
Closed linear precision bearing, Precision - steel



TK
Topball self-aligning linear bearing, Topball self-aligning



ZB
Shaft for linear guides, Hardened ground stainless steel



AWMP
Aluminium shaft for linear guide, Aluminium