



# Articulated clamp

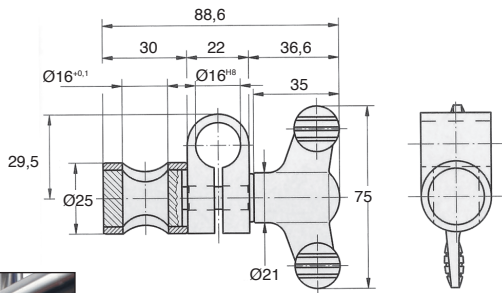
For rod or tube

NSA

- For clamping cylindrical sections (rods, tubes...)
- With wing nut
- Materials:  
Wing knob: thermosetting plastic  
Colour: dark grey  
Clamp: high-resistance anodised aluminium  
Bar and socket: shiny polished chrome-finished steel

## Advantages

- Adjustable without bearing
- Wing nut style knob for quick tightening



Typical application

## DISCOUNTS

Qty	1+	5+	10+
Disc.	List	-10%	On request

Part number	For shaft	Weight (kg)	Stock*	Price each 1 to 4
NSA-16	Ø16	0,150	✓	60,88 €

\*Depending on availability - Dimensions in mm

## Our other products



LRR22  
Small dimension latch with locking system, Aluminium



CLB\_M  
Die cast zinc clamping lever - female, Zamak



UFX  
Spare tyre UNEFLEX® coupling, range



SDCcs  
Positioning sleeve for indexing pin, For pin Ø4 to Ø12



PR40  
Articulated foot Ø50, Ø 50



CNA-CNG  
Right angled mounting plate, Right angled mounting plate for clevis



PRF-SRA  
Lock for aluminium profile, Lock



DBL880  
Idler for slat top chain, Ranges 880 and 881



VCMB  
Dual-thread screw wood/metal, Stainless steel



CHAE4080PA  
Symetrical decorative screwed hinge, Polyamide



CHT  
Asynchronous AC Motor, 0.18 to 0.55kW



PSG055  
Spur gear - precision range, Stainless steel 303

## Complementary products



NSR  
Adjustable clamp, Adjustable



NJM  
Multiple junction clamp, Multiple