

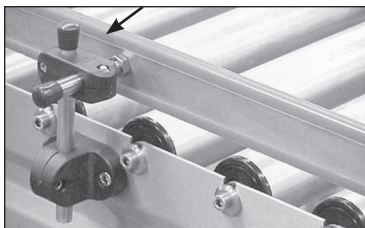
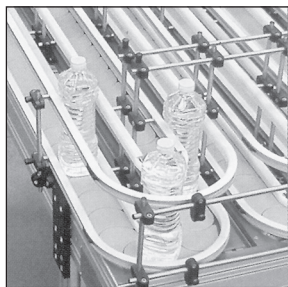
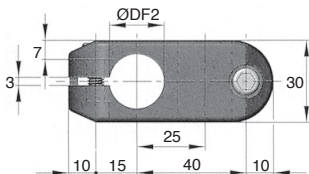
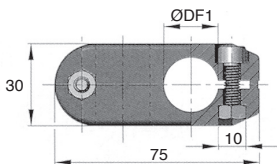
- For  $\text{Ø}14$  to  $\text{Ø}20$  round tube
- Materials:  
Body: reinforced polyamide  
Screws: stainless steel

### Info.

- Not sold individually, please contact us for details

### Accessories

- APB-F and APB-T adjusting rods



↑  
← Typical applications

### DISCOUNTS

Qty	1+	30+	40+	60+
Disc.	List	-5%	-10%	On request

Part number	ØDF1	ØDF2	Weight (kg)	Stock*	Price each 1 to 29
NPTR14-14	14	14	0,07	✓	6,45 €
NPTR14-15	14	15	0,07	-	6,45 €
NPTR14-16	14	16	0,07	-	6,45 €
NPTR15-15	15	15	0,07	-	6,45 €
NPTR15-16	15	16	0,07	-	6,45 €
NPTR16-16	16	16	0,07	✓	6,45 €
NPTR18-18	18	18	0,07	✓	6,45 €
NPTR20-20	20	20	0,07	✓	6,45 €

\*Depending on availability - Dimensions in mm

## Our other products



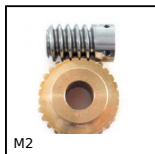
MEP  
Revolving handle for handwheel, Fixed



HK  
Manual locking clamp, Manual locking clamp T



HTD3M\_09  
HTD Heavy duty timing pulley, HTD3 Aluminium



M2  
Worm and wheel set, Bronze



BSCf  
Knurled torque knobs - female, Knurled threaded torque



GE32  
Sprung toggle latch with connecting link, Standard



AT10-50ECO  
AT type timing pulley, Economy range - AT10 aluminium



PRF\_FIX\_STD  
Fastener for aluminium profile, Standard fastener



MEB  
Moulded plastic bevel gear (nylon), 1:1



PGM52-M4  
Pull handle, Aluminium



SSG2\_304L  
Stainless steel spur gear, Stainless steel 304L



MAX26  
Motor-gearbox 12V and 24V DC, from 0,075 to 0,6Nm

## Complementary products



APB\_T  
Adjusting rod for clamp - Female, Bored



APB\_F  
Adjusting rod for clamp - Male, Threaded