

# Fixed tube carrier



## NPTF20

### For Ø10 to Ø14 tubes

- For round or square tubes

- Materials:

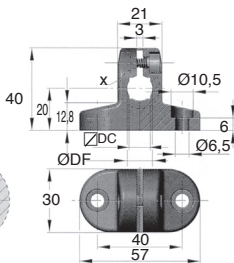
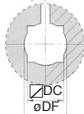
Body: reinforced polyamide

Screws: stainless steel

### Info.

- Not sold individually, please contact us for details

Detail X



### DISCOUNTS

Qty	1+	30+	40+	60+
Disc. List	-5%	-10%	On request	

Part number	Ø DF	∅ DC	Weight (kg)	Stock*	Price each 1 to 29
NPTF20-10	10	8	0,03	✓	5,64 €
NPTF20-12	12	10	0,03	✓	5,64 €
NPTF20-14	14	12	0,03	✓	6,26 €

\*Depending on availability - Dimensions in mm

## NPTF20 ENT

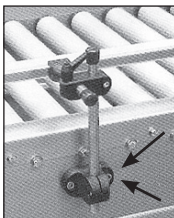
# Spacer for tube carrier

## Plastic

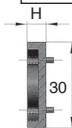
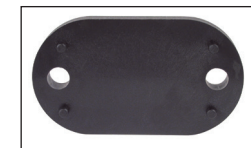
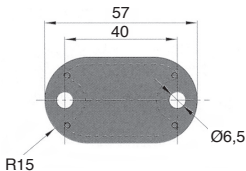
- Material: reinforced polyamide

### Info.

- Not sold individually, please contact us for details



Typical application



### DISCOUNTS

Qty	1+	30+	40+	60+
Disc. List	-5%	-10%	On request	

Part number	H	Weight (kg)	Stock*	Price each 1 to 29
NPTF20-ENT4	4	0,01	✓	2,98 €
NPTF20-ENT6	6	0,02	✓	2,98 €

\*Depending on availability - Dimensions in mm

## Our other products



S4  
Chain sprocket-  
stainless steel, 4mm



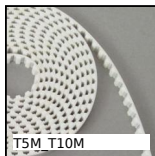
BUH77  
Motor-gearbox 12V  
and 24V DC, from 0.1  
to 2 Nm



RBGpl  
Fixed castor with  
plate, Steel - grey  
rubber



RDERSS  
Stainless steel manual  
rigging screw,  
Stainless steel -  
manual



T5M\_T10M  
T type timing belt per  
metre, T10 Steel  
cored polyurethane



BFA  
Shaft locking washer,  
E clip



BH02  
Single housed bearing  
assembly, Bearing  
secured with circlips



PARF80  
Pressed steel base  
rigid foot, Swivelling -  
Ø80



RFKfp  
Stainless steel  
gearbox - accessories,  
Mounting bracket



ETGamme  
Extension springs  
DIN2097, DIN 2097



SHA\_PTR  
Handwheel with  
folding handle,  
Polyamide



UCP\_SS  
Stainless steel pillow  
block bearing,  
Stainless steel

## Complementary products



NPTF20  
Spacer for tube  
carrier, Fixing  
accessory Ø10 to Ø14



APB\_T  
Adjusting rod for  
clamp - Female, Bored