

NPCR

Plastic

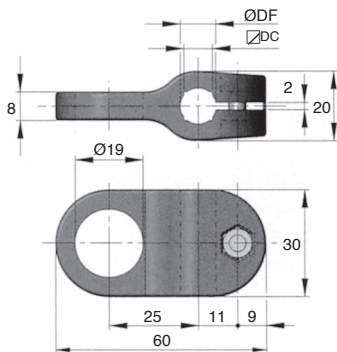
- For round or square tube
- Materials:
Body: reinforced polyamide
Screws: stainless steel

Info.

- Not sold individually, please contact us for details

Accessories

- APB-F and APB-T adjusting rods
- Various types of sensors



DISCOUNTS

Qty	1+	30+	40+	60+
Disc.	List	-5%	-10%	On request

Part number	ØDF	∅ DC	Weight (kg)	Stock*	Price each 1 to 29
NPCR-10	10	8	0,02	✓	5,64 €
NPCR-12	12	10	0,02	✓	5,64 €
NPCR-14	14	12	0,02	✓	6,13 €

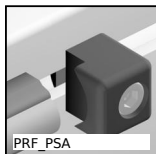
*Depending on availability - Dimensions in mm

Our other products



RT61ss

Self-centering locking Assembly,
Medium/low torque



PRF_PSA

Shaft support for aluminium profile,
Shaft stop



MAX26

Motor-gearbox 12V and 24V DC, from 0,075 to 0,6Nm



BAG

Steel Clamping collar,
Steel



EMS

Stainless steel knurled thumb nut, Knurled



VCMB

Dual-thread screw wood/metal, Steel



BPH

Ball transfer unit plain fit, High



PT882

Drive sprocket for slat top chain, Range 882



PDM_PDV

Detectable plastic palm grip, by metal detectors



PRF4545

Standard aluminium profile, 45 x 45 mm



VRSF

Male swivelling lifting ring, Male swivelling



NKIB

Combined bearing with inner ring, Axial load in both directions

Complementary products



APB_T

Adjusting rod for clamp - Female, Bored



APB_F

Adjusting rod for clamp - Male, Threaded



PCP

Cell carrier assembly, Ready assembled