

Multiple junction clamp



NJM

For rod or tube

- For extending cylindrical sections, either in-line or parallel mounting

- Materials:

Wing knob: thermosetting plastic

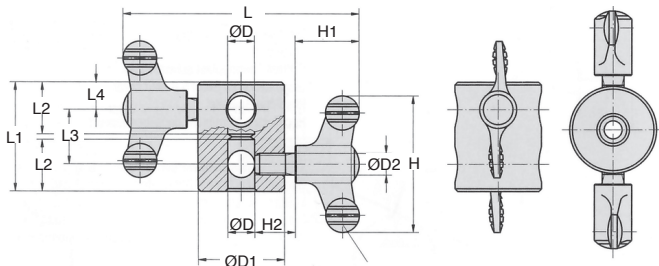
Colour: dark grey

Screw: resistance class 5.8, yellow chromate plated steel

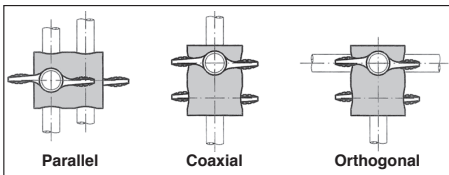
Body: high-resistance anodised aluminium

Advantages

- Parallel mounting arrangement can be used to strengthen a structure
- Additional holes in body allow orthogonal joints to be assembled



Positions:



DISCOUNTS

Qty	1+	5+	10+
Disc.	List	-10%	On request

Part number	ØD	ØD1	ØD2	L	L1	L2	L3	L4	H	H1	H2	Weight (kg)	Price each	
													Stock*	1 to 4
NJM-8	8	28	M8	89	36	17	20	8	50	24	15	0,074	-	44,11 €
NJM-10	10	32	M8	90	40	19	20	10	50	24	15	0,093	✓	46,17 €
NJM-12	12	36	M8	90	44	21	20	12	50	24	15	0,118	-	52,79 €
NJM-16	16	45	M10	126	56	27	24	16	75	35	20	0,262	-	67,34 €

*Depending on availability - Dimensions in mm

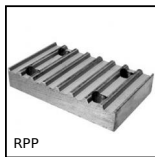
HPC

WEB
04/2020

www.hpceurope.com

Tél: 0 825 88 5000 Service 0,15 €/min + prix appel

Our other products



RPP

Connecting plate for RPP type timing belts, RPP8



PV1R

Adjustable suction-cup support, Standard grip



PWC

Powercoil thread inserts, Kit Powercoil - with or without insertion ...



S2B

Short linear bearing housing, Closed - Slim



MET

Cylindrical sintered bronze bush, Self-lubricating sintered bronze



HW_HT

Half-rail guide, Rail



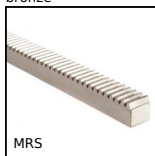
PRF_BV

Screw block, Panel addition and fastening



MEB

Moulded plastic bevel gear (nylon), 1:1



MRS

Stainless steel metric section rack, Stainless



DKGS

Backlash free coupling Gerwah®,



T10_21N1F

T type timing pulley, Economy range - T10



TMR

Rigid manual tensioner, Adjustable

Complementary products



NSA

Adjustable clamp, Articulated



NSR

Adjustable clamp, Adjustable