

Multiple junction clamp



NJM

For rod or tube

- For extending cylindrical sections, either in-line or parallel mounting

- Materials:

Wing knob: thermosetting plastic

Colour: dark grey

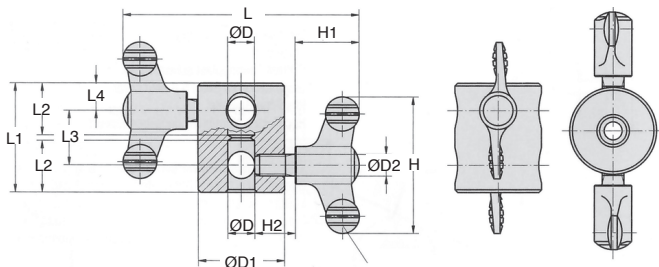
Screw: resistance class 5.8, yellow chromate plated steel

Body: high-resistance anodised aluminium

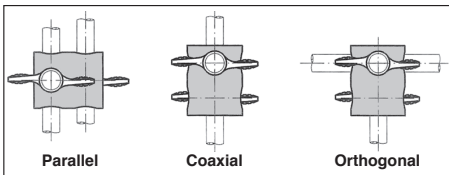


Advantages

- Parallel mounting arrangement can be used to strengthen a structure
- Additional holes in body allow orthogonal joints to be assembled



Positions:



DISCOUNTS

Qty	1+	5+	10+
Disc.	List	-10%	On request

Part number	ØD	ØD1	ØD2	L	L1	L2	L3	L4	H	H1	H2	Weight (kg)	Price each	
													Stock*	1 to 4
NJM-8	8	28	M8	89	36	17	20	8	50	24	15	0,074	-	44,11 €
NJM-10	10	32	M8	90	40	19	20	10	50	24	15	0,093	✓	46,17 €
NJM-12	12	36	M8	90	44	21	20	12	50	24	15	0,118	-	52,79 €
NJM-16	16	45	M10	126	56	27	24	16	75	35	20	0,262	-	67,34 €

*Depending on availability - Dimensions in mm

Our other products



H0

Crossed helical gear
crossed axis at 90°,
Steel 20NCD2



BOX-CS

Hose clamp, Box set
of steel hose clamps



PRF_CLIP_22

Cable clip for
aluminium profile, For
electric and
pneumatic cables



CHAC4040NP

Square hinge with
riveted pin, not
drilled, Square with
riveted pin,...



RURt

Swivel castor with
central hole,
Polyurethane -
Aluminium rim (Free



DOMI80

Accessories, Fixing kit



SHN

Hexagonal nut
DIN934, A2 Stainless
steel



INS100

Self tapping inserts-
coarse thread, Coarse
thread



SH4

Parallel axis helical
gear, Steel 20NCD2



PITA

Locking bolt, with T
handle



SHTC

Drylin® Linear table,
Maintenance free



RHT

High Temperature
wheel, up to 200kg

Complementary products



NSA

Adjustable clamp,
Articulated



NSR

Adjustable clamp,
Adjustable