

# Double cross clamp



## NDS

## Crossed or parallel

- For  $\text{Ø}20$  tubes or shafts
- Multiple connection possibilities, either at right angles or for extending length of tubular elements
- Material :  
Aluminium with steel screws

### Advantages

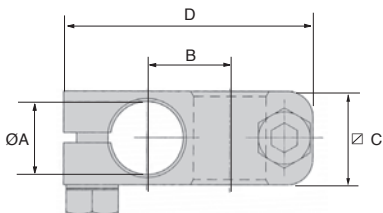
- Clip on, tool free assembly



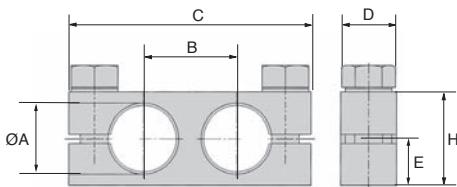
Crossed version



Parallel version



NDS-20/C



NDS-20/P

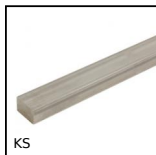
### DISCOUNTS

Qty	1+	10+	30+
Disc.	List	-5%	On request

Part number	Type	ØA	B	C	D	H	E	Weight (g)	Price each 1 to 9
NDS-20/C	crossed	20	22	24	60	-	-	58	26,87 €
NDS-20/P	parallel	20	26	64	14	25	12,5	60	24,92 €

Dimensions in mm

## Our other products



KS

Keysteel, Stainless steel - Keystock



BOXdh

Boxed set of cylindrical dowel pins DIN6325, Boxed set - Solid DIN 6...



ATZY

Diabolo shaped elastomer mount, Steel



BSM\_LOK

Long-Lok spring plunger with internal hexagonal socket, LONG-LOK - s...



SUA4\_L

Chain link, Steel



PW\_PWG05

Wheel - precision range, Bronze



PP60

Worm and wheel gear reducer, from 17.80 to 34 Nm



EBH

Cap nut Hygienic Design®, With collar



RBNtc

Swivel castor with central hole, Steel - rubber - with double brake



SVG

Adjustable latch clamp with strike plate, Stroke from 82mm to 92mm



SUPccss

Self-centering clamping hub stainless steel, With lock nut



PRF\_ART

Articulated bracket for use with aluminium profile, With clamping ha...

## Complementary products



NDS20

Double cross clamp, Crossed