

- Offers multiple connection possibilities for vacuum gripping system elements

- Material :

Aluminium

- Fixing kit not supplied

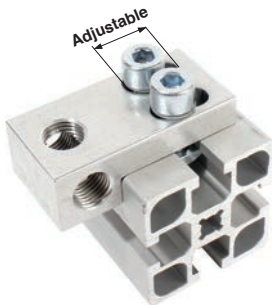
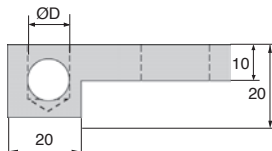
Advantages

- Compatible with 20-30mm profiles and 40-60mm profiles with rectangular mounting holes

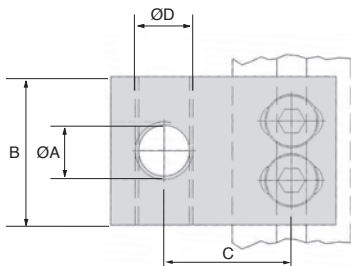
Accessories

- PRF-ECLM8 nut

- M8 screw, length 20-22mm



Typical mounting arrangement



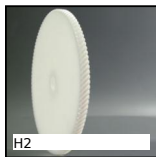
DISCOUNTS

Qty	1+	10+	30+
Disc.	List	-5%	On request

Part number	ØA	B	C	ØD	Weight (g)	Price each 1 to 9
NDS-1/4/C	G1/4"	30	29-39	G1/4"	94	32,59 €

Dimensions in mm

Our other products



Crossed helical gear
crossed axis at 90°,
Machined plastic
(delrin)



Surface mounting
plate, Surface
mounting plate for
clevis



Horizontal toggle
clamp, Horizontal
Lever Clamp - steel



Fixed tube carrier,
Fixed Ø14 to Ø20



Closed linear
precision bearing,
Economy range



H Type Guide units,
For Ø32 actuators



Masterplate®
glueable insert Ø19,
Cylindrical with
tapped insert



Tensioner pulley, For
V belts



Internal epicyclic
servo reducers, from
0.05 to 100 Nm



Spur gear - precision
range, Case hardened



Steel splined shaft,
Steel



Toggle latches,
Standard

Complementary products



Nut for aluminium
profile, Steel square
nut with tab