

Cylindrical Master-Plate® glueable insert Ø23

Inox 316L

MSP23

- Glueable stainless steel plate with tapped insert or threaded stud
- Material:
316L stainless steel

Applications

- Industrial, transport, building, furnishings

Info.

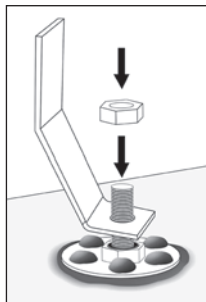
- Glue not supplied
- Not supplied individually, contact us for details



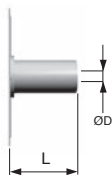
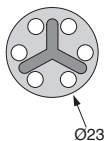
316L stainless steel



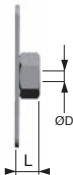
316L stainless steel



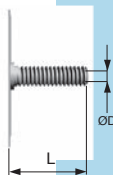
Typical application



Tapped



Nut



Thread

DISCOUNTS

| | | | | |
|-------|------|------|------|------------|
| Qty | 1+ | 50+ | 100+ | 500+ |
| Disc. | List | -10% | -20% | On request |

| Part number | A | ØD | L | Form | Price each 1 to 49 |
|----------------|----|----|-----|--------|-----------------------|
| MSP23T-4-10/SS | 23 | M4 | 10 | Tapped | 6,13 € |
| MSP23T-5-10/SS | 23 | M5 | 10 | Tapped | 6,33 € |
| MSP23T-6-10/SS | 23 | M6 | 10 | Tapped | 6,55 € |
| MSP23E-4-3/SS | 23 | M4 | 3,2 | Nut | 1,93 € |
| MSP23E-5-4/SS | 23 | M5 | 4 | Nut | 1,97 € |
| MSP23E-6-5/SS | 23 | M6 | 5 | Nut | 2,24 € |
| MSP23F-4-16/SS | 23 | M4 | 16 | Thread | 2,05 € |
| MSP23F-4-20/SS | 23 | M4 | 20 | Thread | 2,07 € |
| MSP23F-5-12/SS | 23 | M5 | 12 | Thread | 2,07 € |
| MSP23F-6-25/SS | 23 | M6 | 25 | Thread | 2,26 € |

Fax

0 825 88 6000

Service 0,15 € / min
+ prix appel

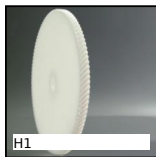
cial2@hpceurope.com

HPC

SUPPLEMENT 2019

83

Our other products



H1
Crossed helical gear
crossed axis at 90°,
Machined plastic
(delrin)



PGT
Sliding profile, Sliding
panel support



HW_HT
Half-rail guide, Wheel



FBL4004_K7
Brush strip per meter
PA6 fibres Ø0.3 to
Ø0.5, Black polyamide
6 -...



PT820
Drive sprocket for slat
top chain, Ranges 820
and 815



BLHB20
Right angled gearbox,
bored shafts, up to
1.77 Nm



GPBSS
Threaded spherical
knob, Aluminium



DBL805
Idler for slat top
chain, Range 805



MO
Worm and wheel set,
Hardened steel



RTE
Rotex®, jaw coupling,
steel



TFR
Rigid manual
tensioner, Fixed



CFF_SS
Female rod ends DIN
ISO12240-4, Stainless
steel / bronze -
Economy r...

Complementary products



MSP3815
Masterplate®
glueable insert
rectangular,
rectangular with

tapped i...



MSP38

Masterplate®
glueable insert Ø38,
Cylindrical Ø38 with
threaded s...



MSP23

Masterplate®
glueable insert Ø23,
Cylindrical Ø23 with
threaded s...



MSP3815

Masterplate®
glueable insert
rectangular,
rectangular with nut