

Cylindrical Master-Plate® glueable insert

MSP19
MSP20

316L stainless steel

- Glueable stainless steel plate with tapped insert or threaded stud
- Material:
316L stainless steel

Applications

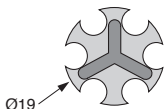
- Industrial, transport, building, furnishings

Info.

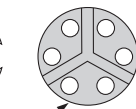
- Glue not supplied
- Not supplied individually, contact us for details



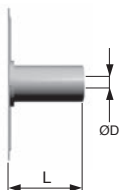
316L stainless steel



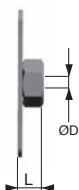
MSP19



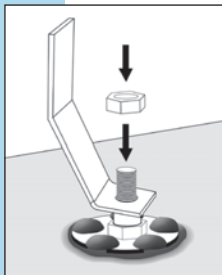
MSP20



Tapped



Nut



Typical application



DISCOUNTS

| | | | | |
|-------|------|------|------|------------|
| Qty | 1+ | 50+ | 100+ | 500+ |
| Disc. | List | -10% | -20% | On request |

| Part number | ØA | ØD | L | Form | Prix Uni. 1 à 49 |
|-----------------|----|----|-----|--------------|---------------------|
| MSP19TB-5-20/SS | 19 | M5 | 20 | Blind tapped | 7,81 € |
| MSP19E-4-3/SS | 19 | M4 | 3,2 | Nut | 1,90 € |
| MSP19E-5-4/SS | 19 | M5 | 4 | Nut | 1,93 € |
| MSP20E-5-4/SS | 20 | M5 | 4 | Nut | 1,95 € |

Our other products



CHT80

Asynchronous AC Motor 0.55 to 1.1kW, 0.55 to 1.1kW



INS_BR

Self tapping brass insert, Brass



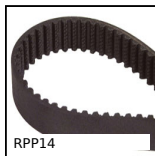
BOXKU

Boxed set of half round (Woodruff) keys NFE22179, Boxed set of half ...



BABreglable

Adjustable ball pin hardened stainless steel, adjustable



RPP14

RPP heavy duty timing belt, RPP14



DOG316

Motor-gearbox 12V and 24V DC, from 1.5 to 2 Nm



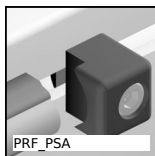
NDS20

Double cross clamp, Parallel



RFV50

Stainless steel worm and wheel gearbox, up to 80 Nm



PRF_PSA

Shaft support for aluminium profile, Shaft stop



APB_F

Adjusting rod for clamp - Male, Threaded



SCE

U-shaped cable clamp, Steel



RAS

90° ball and socket joints DIN71802, Stainless steel

Complementary products



MSP3815

Masterplate® glueable insert rectangular, rectangular with

tapped i...



MSP38

Masterplate®
glueable insert Ø38,
Cylindrical Ø38 with
threaded s...



MSP23

Masterplate®
glueable insert Ø23,
Cylindrical Ø23 with
threaded s...



MSP3815

Masterplate®
glueable insert
rectangular,
rectangular with nut