

# Cylindrical Master-Plate<sup>®</sup> glueable insert

**MSP19**  
**MSP20**

316L stainless steel

- Glueable stainless steel plate with tapped insert or threaded stud
- Material:  
316L stainless steel

## Applications

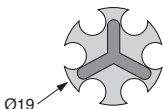
- Industrial, transport, building, furnishings

## Info.

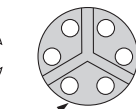
- Glue not supplied
- Not supplied individually, contact us for details



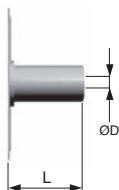
316L stainless steel



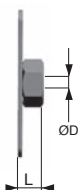
MSP19



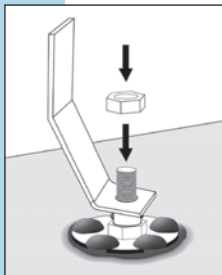
MSP20



Tapped



Nut



Typical application



## DISCOUNTS

Qty	1+	50+	100+	500+
Disc.	List	-10%	-20%	On request

Part number	ØA	ØD	L	Form	Prix Uni. 1 à 49
MSP19TB-5-20/SS	19	M5	20	Blind tapped	7,81 €
MSP19E-4-3/SS	19	M4	3,2	Nut	1,90 €
MSP19E-5-4/SS	19	M5	4	Nut	1,93 €
MSP20E-5-4/SS	20	M5	4	Nut	1,95 €

## Our other products



UTKpwr  
Utilitak® V rail, V rail



PCS375S  
Chain sprocket -  
Stainless steel, 9.525  
(DIN 06B-1)



B\_ECO  
Eco. range steel bevel  
gear, 1:1



PRF\_ROUL  
Castor for aluminium  
profile, No brake



BAG0  
Locking rings in steel,  
Steel



M1  
Worm and wheel set,  
Hardened steel



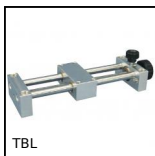
TCLar  
Automatic chain  
tensioner, With wide  
guide



BCM\_TP  
Modular cylindrical  
brush, Tampico  
bristles



CLR  
Straight clevis,  
Straight clevis for use



TBL  
Mini leadscrew table  
with metric thread,



INS100  
Self tapping inserts-  
coarse thread, Coarse



PT880  
Drive sprocket for slat  
top chain, Range 880

## Complementary products



MSP3815  
Masterplate®  
glueable insert  
rectangular,  
rectangular with

tapped i...



Masterplate®  
glueable insert Ø38,  
Cylindrical Ø38 with  
threaded s...



Masterplate®  
glueable insert Ø23,  
Cylindrical Ø23 with  
threaded s...



Masterplate®  
glueable insert  
rectangular,  
rectangular with nut