

Clip-on support brush



MGS

For Ø28mm tubes

- For vertical, inclined or horizontal storage systems or transport applications

- Silicon free

- Materials:

Fibres: Polyamide 6

Body: PVC

Assembly

- Rapid, tool-free assembly

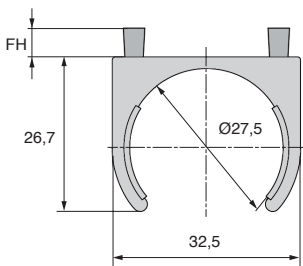
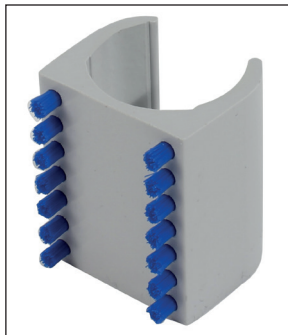
- Works with 28mm diameter tube systems

Advantages

- Easily removed

- Will not slip on tube

- Suitable for all common surfaces (wood, metal, glass)



DISCOUNTS

Qty	1+	20+	40+	60+	80+	100+
Disc.	List	-5%	-10%	-15%	-20%	On request

Part number	Body length (mm)	FH	Ø fibre	Fibre colour	Fibre texture	Price each 1 to 19
MGS2800-K10	40	5	0,10	black	smooth	4,57 €
MGS2800-K20	40	5	0,20	blue	smooth	4,57 €
MGS2800-K30	40	5	0,30	red	smooth	4,57 €

Dimensions in mm

HPC

WEB
04/2020

www.hpceurope.com

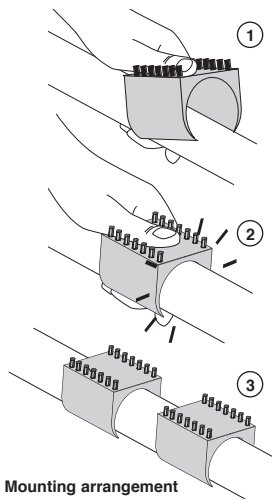
Tél: 0 825 88 5000 Service 0,15 €/min + prix appel

Clip-on support brush

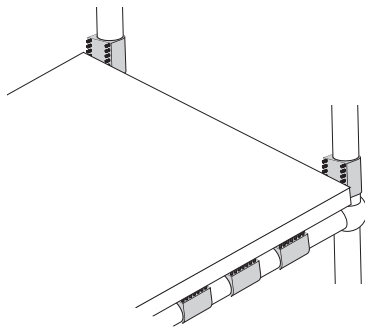
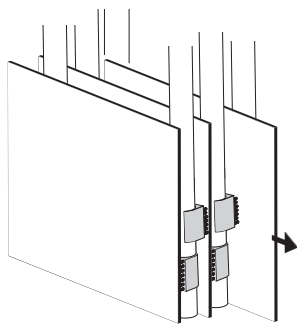
Principal of operation

MGS

- **Commercially available tubes are often used to manufacture trolleys, assembly stations, storage bays or workstations.** To provide an environment that will not damage the delicate products being handled, these clip-on brushes, with their thousands of sensitive bristles protect against scratches or scuffs that would then require rework or cause expensive rejects. They are designed for 28mm diameter tubes, are available in 3 fibre thicknesses and can easily be installed on transport or storage system before or after assembly. Should the position of a brush need to be changed for example to improve the protection, they are easily removed for re-mounting in an alternative position.



Mounting arrangement



Typical application