



Stainless steel flexible bellows coupling

Couplings for servo-motors

MFBSc

Torque: 0.5 to 3Nm

- High precision
- High torsional stiffness
- Large misalignment
- Identical operation in both clockwise and anti-clockwise directions
- Materials:
 - Hub: stainless steel 303
 - Bellows: stainless steel 316L
- Max. working temperature: +150°C
- Bellows and hub bonded together

stainless steel

clamp hub

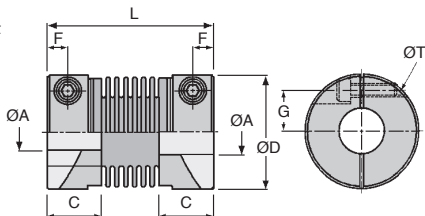


Uses

- Encoders, automated and robotic systems
- Stepper motors that cannot detect start position

Info

- We are unable to modify these parts



Part number	Misalignment			Torque	
	Radial (mm)	Axial (mm)	Angular	Nominal (Nm)	Max. (Nm)
MFBS-12C	0,10	+0,40 -1,20	1,5°	0,5	1
MFBS-16C	0,10	+0,40 -1,20	1,5°	1,0	2
MFBS-20C	0,15	+0,60 -1,80	2,0°	1,5	3
MFBS-25C	0,15	+0,60 -1,80	2,0°	2,0	4
MFBS-32C	0,20	+0,80 -2,50	2,0°	3,0	6

DISCOUNTS

Qty	1+	2+	4+
Disc.	List	-6%	On request

Part number	Standard bore ØA	Max. bore ØA	ØD	L	C	ØT	F	G	Moment of inertia (kg·m ²)	Torsional stiffness (Nm/Rad)	Max. rotational speed (rpm)	Stock*	Price each Standard Bore
												Standard bores	
MFBS-12C	4 x 4	5,00	12	23,5	7,5	M2	2,25	4,0	2,1 x 10 ⁻⁷	100	52 000	✓	177,70 €
MFBS-16C	5 x 5	6,35	16	26,5	9,0	M2,5	3,00	5,0	8,1 x 10 ⁻⁷	150	39 000	✓	178,36 €
MFBS-20C	6 x 6	8,00	20	32,0	10,0	M2,5	3,50	6,5	2,3 x 10 ⁻⁶	220	31 000	✓	220,16 €
MFBS-25C	8 x 8	10,0	25	36,5	12,0	M3	4,50	9,0	6,9 x 10 ⁻⁶	330	25 000	✓	228,02 €
MFBS-32C	8 x 8	14,0	32	42,0	13,5	M4	5,00	11,0	2,1 x 10 ⁻⁵	490	19 000	✓	259,42 €

*Depending on availability - Dimensions in mm

Our other products



AT5P_AT10P

Connecting plate for AT type timing belts, AT10



BOXINS300

Box set of self tapping inserts, Boxed set - For hard materials



BOXbeta

Box of assorted hitch pins, Boxed set - hitch



WS20

Drylin® W rail, Rail



CHB

Reaction arm, CHB gear reducers reaction arm



KBS_UU

Stainless steel closed precision linear bearing, Precision - stainle...



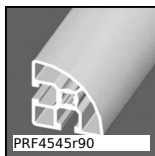
T10courroie

T type timing belt, T10 Steel cored polyurethane



BL15

Right angled gearbox, from 1.10 to 6 Nm



PRF4545r90

Standard aluminium profile, 45 x 45 mm - R90°



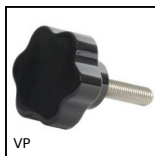
MPB

Hexagonal spacer, Brass



BOX-TOR-MAX

Box set of Nitrile O-rings in nitrile, 2.90 x 1.78mm to 82.14 x



VP

Small 6 lobe threaded handle - male, Duroplast - Steel

Complementary products



MFBC

Flexible Bellows coupling, Aluminium and Bronze - with clamping jaw



MFBS

Stainless steel flexible bellows coupling, Stainless steel - with se...