



Stainless steel flexible bellows coupling

Couplings for servo-motors

MFBSc

Torque: 0.5 to 3Nm

- High precision
- High torsional stiffness
- Large misalignment
- Identical operation in both clockwise and anti-clockwise directions
- Materials:
 - Hub: stainless steel 303
 - Bellows: stainless steel 316L
- Max. working temperature: +150°C
- Bellows and hub bonded together

stainless steel

clamp hub

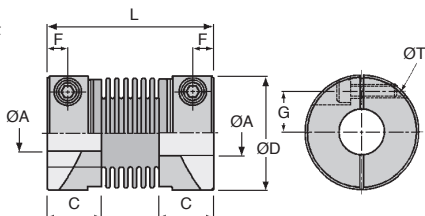


Uses

- Encoders, automated and robotic systems
- Stepper motors that cannot detect start position

Info

- We are unable to modify these parts



Part number	Misalignment			Torque	
	Radial (mm)	Axial (mm)	Angular	Nominal (Nm)	Max. (Nm)
MFBS-12C	0,10	+0,40 -1,20	1,5°	0,5	1
MFBS-16C	0,10	+0,40 -1,20	1,5°	1,0	2
MFBS-20C	0,15	+0,60 -1,80	2,0°	1,5	3
MFBS-25C	0,15	+0,60 -1,80	2,0°	2,0	4
MFBS-32C	0,20	+0,80 -2,50	2,0°	3,0	6

DISCOUNTS

Qty	1+	2+	4+
Disc.	List	-6%	On request

Part number	Standard bore ØA	Max. bore ØA	ØD	L	C	ØT	F	G	Moment of inertia (kg·m ²)	Torsional stiffness (Nm/Rad)	Max. rotational speed (rpm)	Stock	Price each Standard Bores
												Standard bores	
MFBS-12C	4 x 4	5,00	12	23,5	7,5	M2	2,25	4,0	2,1 x 10 ⁻⁷	100	52 000	✓	177,70 €
MFBS-16C	5 x 5	6,35	16	26,5	9,0	M2,5	3,00	5,0	8,1 x 10 ⁻⁷	150	39 000	✓	178,36 €
MFBS-20C	6 x 6	8,00	20	32,0	10,0	M2,5	3,50	6,5	2,3 x 10 ⁻⁶	220	31 000	✓	220,16 €
MFBS-25C	8 x 8	10,0	25	36,5	12,0	M3	4,50	9,0	6,9 x 10 ⁻⁶	330	25 000	✓	228,02 €
MFBS-32C	8 x 8	14,0	32	42,0	13,5	M4	5,00	11,0	2,1 x 10 ⁻⁵	490	19 000	✓	259,42 €

*Depending on availability - Dimensions in mm

Our other products



PTA80

Articulated levelling foot, pressed base
Ø80, Ø 80



AT5-BAR

AT type tooth bar stock, AT5



DOMI30

Domino 30 adjustable slide, Slide DOMILINE 30 with counter and handw...



PTA50ssEB

Articulated foot with sheet metal base
Ø50, Articulated foot



ZDB

Machined plastic bevel gear , 2:1



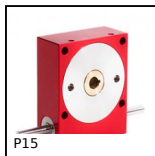
ZBconique

Machined plastic bevel gear , 1:1



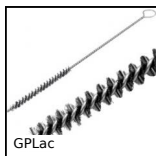
MFB_MHB

Moulded plastic bevel gear (nylon), 1.5:1



P15

Worm and wheel gear reducer, up to 3,75 Nm



GPLac

Brush, steel



HK

Manual locking clamp, Manual locking clamp



CHAEpac

Square decorative screwed hinges,



ZBconique

Machined plastic bevel gear , 1:1

Complementary products



MFBC

Flexible Bellows coupling, Aluminium and Bronze - with clamping jaw



MFBS

Stainless steel flexible bellows coupling, Stainless steel - with se...