

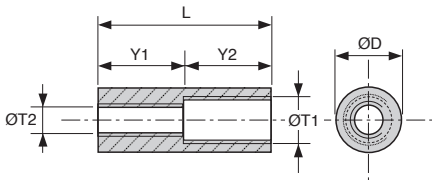
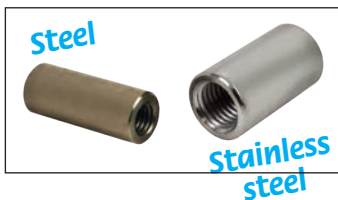
Cylindrical reducing sleeve

SteSta

MCL

Steel or **stainless steel**

- **Male/female sleeve**
- Allows 2 rods of different diameters to be joined
- Materials:
 - Galvanised steel
 - 303 Stainless steel
- **Supplied by the pack**



DISCOUNTS

Qty	1+	5+	20+	50+
Disc.	List	-5%	-10%	On request

Part number	ØT1	ØT2	ØD	L	Y1	Y2	Qty per pack	Price each 1 to 4
Steel								
MCL6-8-40/B	M6	M8	13	40	20	20	20	19,82 €
MCL6-10-40/B	M6	M10	16	40	20	20	20	28,36 €
MCL8-10-40/B	M8	M10	16	40	20	20	20	28,36 €
MCL8-12-40/B	M8	M12	16	40	20	20	20	28,36 €
MCL10-12-40/B	M10	M12	16	40	20	20	20	28,36 €
MCL10-16-40/B	M10	M16	22	40	20	20	20	40,53 €
MCL12-16-40/B	M12	M16	22	40	20	20	20	40,53 €
Stainless steel								
MCL6-8-40/SS/B	M6	M8	13	40	20	20	20	53,60 €
MCL6-10-40/SS/B	M6	M10	16	40	20	20	20	70,75 €
MCL8-10-40/SS/B	M8	M10	16	40	20	20	20	70,75 €
MCL8-12-40/SS/B	M8	M12	16	40	20	20	20	70,75 €
MCL10-12-40/SS/B	M10	M12	16	40	20	20	20	70,75 €
MCL10-16-40/SS/B	M10	M16	22	40	20	20	20	130,85 €
MCL12-16-40/SS/B	M12	M16	22	40	20	20	20	130,85 €

Dimensions in mm

Our other products



HBM

Adjustment bushing for half-rail guide, Adjustment bushing



TBbutee

Axial thrust bearing, Steel balls



MFBS

Stainless steel flexible bellows coupling, Stainless steel - with se...



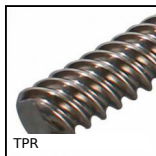
PR40

Articulated foot Ø50, Ø 50



DOG316

Motor-gearbox 12V and 24V DC, from 1.5 to 2 Nm



TPR

High helix leadscrew, Leadscrew only - up to 40mm per rotation



NTMbr

Set screw brass tip, Brass-point



M1

Worm and wheel set, Non hardened steel



SSDB

Stainless steel bevel gear, 2:1



VML

Stainless steel hexagonal headed



NIN

Self-locking nut, A2 Stainless steel



BAC105

Storage bin, 8mm

Complementary products



MHXred

Reducing sleeve male/female, Hexagonal - stainless steel



TIF

Threaded rod - DIN975, Stainless steel A2



TIFss

Threaded stud - DIN976A, Stainless steel



MCL

Cylindrical threaded sleeve, Cylindrical - stainless steel