

Worm and wheel set



Module Worm in steel or **machined** plastic

1.0

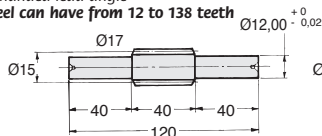


- Pitch 3.142mm
- **Machined parts**
- Pressure angle 20°
- Right handed lead angle
- Materials:
Worm: Steel 20NCD2 or Delrin plastic
Wheel: bronze CuAl10NiFe4
or delrin plastic
- Delrin: Working temp. -50°C to +80°C

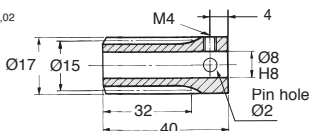


Options

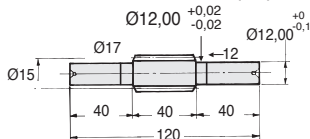
- Left handed lead angle
- **Wheel can have from 12 to 138 teeth**



Steel worm with shaft (SW)



Steel (W) or plastic (ZW) worm with bore



Plastic worm with shaft (ZSW)

DISCOUNT Bronze

Qty	1+	6+	20+	50+
Disc.	List -12% -25% On request			

DISCOUNT Delrin

Qty	1+	6+	30+
Disc.	List -22% On request		

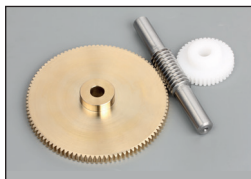
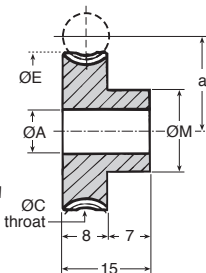
Part number		No. of starts	Lead angle	Price each 1 to 5	
Worm with bore	Worm with shaft			Worm with bore	Worm with shaft
Non hardened steel					
W1-1	SW1-1	1	3°48'	37,40 €	69,07 €
W1-2	SW1-2	2	7°35'	39,58 €	70,95 €
W1-3	SW1-3	3	11°18'	43,42 €	75,74 €
W1-4	SW1-4	4	14°56'	45,34 €	76,85 €
Hardened steel					
WH1-1	SWH1-1	1	3°48'	53,29 €	98,15 €
WH1-2	SWH1-2	2	7°35'	56,24 €	100,85 €
WH1-3	SWH1-3	3	11°18'	61,67 €	107,55 €
WH1-4	SWH1-4	4	14°56'	64,45 €	109,17 €
Delrin					
ZW1-1	ZSW1-1	1	3°48'	26,42 €	48,75 €
ZW1-2	ZSW1-2	2	7°35'	27,88 €	50,01 €
ZW1-3	ZSW1-3	3	11°18'	30,62 €	53,38 €
ZW1-4	ZSW1-4	4	14°56'	31,91 €	54,21 €

Dimensions in mm

Wheel in bronze or machined plastic Module 1.0

Info.

- Pitch 3.142mm
- To order, add the number of starts on the worm to the wheel's part number.
E.g: worm W1-1, wheel M1-20/1
- The use of a delrin worm with a delrin wheel is only recommended for occasional use. The use of a delrin worm with a steel wheel is preferred.



Torque and power indication
for 50 teeth at 1000 rpm (input)

WHEEL material	Bronze Nm (kW)	Delrin Nm (kW)
WORM material		
Steel	5.87 (0.012)	3.42 (0.0072)
Hardened steel	10.06 (0.021)	-
Delrin	-	1.32 (0.0027)

DISCOUNT Steel

Qty	1+	6+	20+	50+
Disc.	List	-12%	-25%	On request

DISCOUNT Delrin

Qty	1+	6+	30+
Disc.	List	-22%	On request

Part number		Z	Centres				Price each 1 to 5		
Bronze	Plastic	Teeth	ØP	ØC	ØE	ØM	ØA	Bronze	Plastic
M1-12	ZM1-12	12	12	13,50	14	15	15	37,63 €	18,93 €
M1-15	ZM1-15	15	15	15,00	17	18	15	38,95 €	19,53 €
M1-18	ZM1-18	18	18	16,50	20	21	15	40,58 €	20,33 €
M1-20	ZM1-20	20	20	17,50	22	23	15	40,97 €	20,56 €
M1-24	ZM1-24	24	24	19,50	26	27	20	43,12 €	21,75 €
M1-25	ZM1-25	25	25	20,00	27	28	20	45,04 €	22,57 €
M1-28	ZM1-28	28	28	21,50	30	31	20	46,70 €	23,41 €
M1-30	ZM1-30	30	30	22,50	32	33	25	48,19 €	26,69 €
M1-32	ZM1-32	32	32	23,50	34	35	25	50,66 €	28,10 €
M1-40	ZM1-40	40	40	27,50	42	43	25	68,42 €	43,04 €
M1-42	ZM1-42	42	42	28,50	44	45	25	69,94 €	44,00 €
M1-48	ZM1-48	48	48	31,50	50	51	25	84,82 €	53,38 €
M1-50	ZM1-50	50	50	32,50	52	53	25	91,30 €	57,50 €
M1-60	ZM1-60	60	60	37,50	62	63	25	100,57 €	63,34 €
M1-78	ZM1-78	78	78	46,50	80	81	25	131,21 €	82,64 €
M1-80	ZM1-80	80	80	47,50	82	83	25	149,28 €	94,01 €
M1-90	ZM1-90	90	90	52,50	92	93	25	185,57 €	116,90 €
M1-100	ZM1-100	100	100	57,50	102	103	25	290,99 €	106,08 €
M1-110	ZM1-110	110	110	62,50	112	113	30	290,99 €	106,08 €

Wheels available up to this size

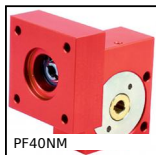
M1-138	ZM1-138	138	Dimensions : contact us	On request	On request
--------	---------	-----	-------------------------	------------	------------

Dimensions in mm

Our other products



APB_BOU
Protective cap, Safety cap



PF40NM
Worm and wheel gear reducer, up to 18 Nm



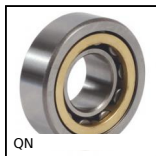
RJA10_03
Sealing strip, Clipping



PAT123
Pressed stainless steel articulating foot
Ø123, Ø 123



PSEC
Security pull handle, Thermoplastic



QN
Single row cylindrical roller bearing, Free outer ring



ETGamme
Extension springs
DIN2097, DIN 2097



PT881
Drive sprocket for slat top chain, Range 881



PM4
Worm and wheel set, Bronze



ZG2
Plastic spur gear, Machined plastic



NCT
Square tube connector, Fixed



SH1
Parallel axis helical gear, Steel 20NCD2

Complementary products



M1
Worm and wheel set, Hardened steel



M1
Worm and wheel set, Machined plastic (delrin)