

# Worm and wheel set



## Module 0.5 Worm in steel or machined plastic

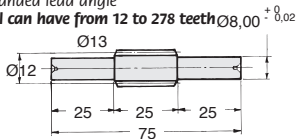


- Pitch 1.571mm
- Machined parts
- Pressure angle 20°
- Right handed lead angle
- Materials:  
Worm: Steel 20NCD2 or Delrin plastic  
Wheel: bronze CuAl10NiFe4 or Delrin plastic
- Delrin: Working temp. -50°C to +80°C

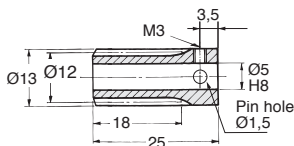


### Options

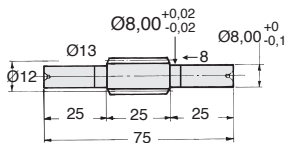
- Left handed lead angle
- Wheel can have from 12 to 278 teeth  $\varnothing 8,00^{+0,02}$



Steel worm with shaft (SW)



Steel (W) or plastic (ZW) worm with bore



Plastic worm with shaft (ZSW)

### DISCOUNT Steel

Qty	1+	6+	20+	50+
Disc.	List	-12%	-25%	On request

### DISCOUNT Delrin

Qty	1+	6+	30+
Disc.	List	-22%	On request

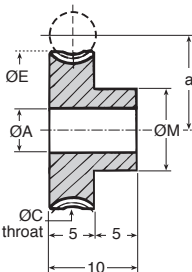
Part number		No. of starts	Lead angle	Price each 1 to 5	
Worm with bore	Worm with shaft			Worm with bore	Worm with shaft
<b>Non hardened steel</b>					
W0.5-1	SW0.5-1	1	2°23'	28,40 €	55,93 €
W0.5-2	SW0.5-2	2	4°45'	29,44 €	58,42 €
W0.5-3	SW0.5-3	3	7°07'	30,93 €	61,63 €
W0.5-4	SW0.5-4	4	9°27'	33,31 €	64,45 €
<b>Hardened steel</b>					
WH0.5-1	SWH0.5-1	1	2°23'	40,37 €	79,50 €
WH0.5-2	SWH0.5-2	2	4°45'	41,86 €	82,96 €
WH0.5-3	SWH0.5-3	3	7°07'	44,00 €	87,57 €
WH0.5-4	SWH0.5-4	4	9°27'	47,30 €	91,73 €
<b>Delrin</b>					
ZW0.5-1	ZSW0.5-1	1	2°23'	19,94 €	39,47 €
ZW0.5-2	ZSW0.5-2	2	4°45'	20,81 €	41,18 €
ZW0.5-3	ZSW0.5-3	3	7°07'	21,75 €	43,42 €
ZW0.5-4	ZSW0.5-4	4	9°27'	23,41 €	45,57 €

Dimensions in mm

## Wheel in bronze or machined plastic Module 0.5

### Info.

- Pitch 1.571mm
- To order, add the number of starts on the worm to the wheel's part number.  
E.g: worm **WO.5-1**, wheel **MO.5-20/1**
- The use of a delrin worm with a delrin wheel is only recommended for occasional use. The use of a delrin worm with a steel wheel is preferred.



**Torque and power indication**  
for 50 teeth at 1000 rpm (input)

WHEEL material	Bronze	Delrin
WORM material	Nm (kW)	Nm (kW)
Steel	1.01 (0.0060)	0.65 (0.0040)
Hardened steel	1.86 (0.0039)	-
Delrin	-	0.25 (0.0005)

### DISCOUNT Steel

Qty	1+	6+	20+	50+
Disc.	List	-12%	-25%	On request

### DISCOUNT Delrin

Qty	1+	6+	30+
Disc.	List	-22%	On request

Part number		Z	Centres					Price each 1 to 5		
Bronze	Plastic	Teeth	ØP	a	ØC	ØE	ØM	ØA	Bronze	Plastic
M0.5-12	ZM0.5-12	12	6,00	9,00	7,00	7,50	5,00	3	22,05 €	11,03 €
M0.5-15	ZM0.5-15	15	7,50	9,75	8,50	9,00	6,50	4	23,30 €	11,68 €
M0.5-20	ZM0.5-20	20	10,00	11,00	11,00	11,50	8,50	4	25,79 €	12,93 €
M0.5-25	ZM0.5-25	25	12,50	12,25	13,50	14,00	10,00	4	27,53 €	13,83 €
M0.5-28	ZM0.5-28	28	14,00	13,00	15,00	15,50	10,00	4	28,01 €	14,03 €
M0.5-30	ZM0.5-30	30	15,00	13,50	16,00	16,50	13,00	6	28,12 €	14,06 €
M0.5-32	ZM0.5-32	32	16,00	14,00	17,00	17,50	13,00	6	29,35 €	14,72 €
M0.5-40	ZM0.5-40	40	20,00	16,00	21,00	21,50	13,00	6	34,23 €	17,21 €
M0.5-42	ZM0.5-42	42	21,00	16,50	22,00	22,50	13,00	6	34,77 €	17,41 €
M0.5-48	ZM0.5-48	48	24,00	18,00	25,00	25,50	13,00	6	36,51 €	18,29 €
M0.5-50	ZM0.5-50	50	25,00	18,50	26,00	26,50	13,00	6	37,02 €	18,57 €
M0.5-60	ZM0.5-60	60	30,00	21,00	31,00	31,50	13,00	6	43,64 €	24,15 €
M0.5-78	ZM0.5-78	78	39,00	25,50	40,00	40,50	13,00	6	55,43 €	30,69 €
M0.5-80	ZM0.5-80	80	40,00	26,00	41,00	41,50	13,00	6	57,20 €	36,00 €
M0.5-90	ZM0.5-90	90	45,00	28,50	46,00	46,50	13,00	6	76,77 €	48,30 €
M0.5-100	ZM0.5-100	100	50,00	31,00	51,00	51,50	13,00	6	91,23 €	57,50 €
M0.5-110	ZM0.5-110	110	55,00	33,50	56,00	56,50	13,00	6	95,00 €	59,83 €
M0.5-150	ZM0.5-150	150	75,00	43,50	76,00	76,50	13,00	6	102,40 €	64,36 €
M0.5-160	ZM0.5-160	160	80,00	46,00	81,00	81,50	13,00	6	116,81 €	73,60 €
M0.5-200	ZM0.5-200	200	100,00	56,00	101,00	101,50	13,00	6	221,69 €	80,79 €

**Wheels available up to this size**

M0.5-278 ZM0.5-278 278  
Dimensions in mm

Dimensions : contact us

On request On request

## Our other products



CHMR40

Worm and wheel gear reducer, up to 57 Nm



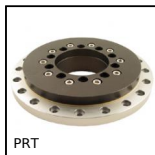
DTR

Chain idler sprocket,  
Chain idler sprocket - Plastic



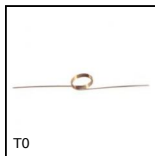
UGH32

H Type Guide units,  
For Ø32 actuators



PRT

Rotary table iglidur®,  
Iglidur®, aluminium  
and stainless steel



T0

Torsion spring,  
Stainless steel



BLHB40

Right angled gearbox,  
bored shafts, up to  
10.3 Nm



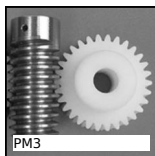
ACL-PLAngle

Joining plate for  
aluminium profile,  
Angle connection



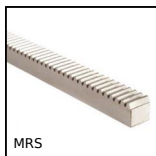
GE1006

Elastic ringed latch,  
Hooks into a slot



PM3

Worm and wheel set,  
Machined plastic  
(delrin)



MRS

Stainless steel metric  
section rack, Stainless  
steel



CHAE3030PA

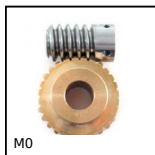
Square decorative  
screwed hinges,  
Polyamide



ADSR

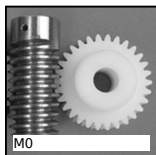
Backlash free  
coupling Gerwah®,  
from 12.5 to 525Nm

## Complementary products



M0

Worm and wheel set,  
Bronze



M0

Worm and wheel set,  
Machined plastic  
(delrin)