

Spring loaded latch

Stock Bra

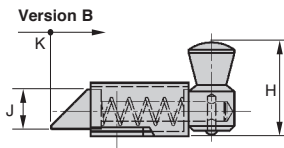
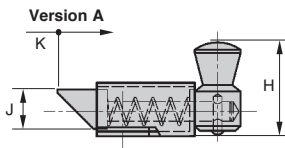
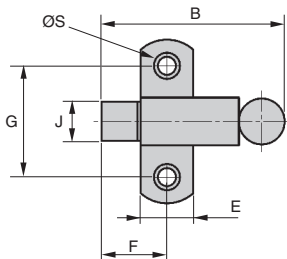
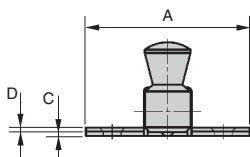
LRR

Plated steel

- Spring return latch
- Inward/outward opening versions available (A+ B versions)
- Materials : Galvanised steel

Accessory

- Catch plate LRRgpv (tome 5 p.213)



DISCOUNTS

| | | | | |
|------------|-----|-----|------------|-----|
| Qty | 1+ | 10+ | 20+ | 50+ |
| Disc. List | -3% | -5% | On request | |

| Part number | A | B | C | D | E | F | G | H | J | K | ØS | Material | Weight (g) | Price each | |
|------------------|----|----|-----|-----|----|----|----|----|----|----|----|----------|------------|------------|---------|
| | | | | | | | | | | | | | | Stock* | 1 to 9 |
| Version A | | | | | | | | | | | | | | | |
| LRR-50-A/ZN | 50 | 56 | 1,5 | 1,2 | 16 | 20 | 34 | 27 | 12 | 12 | 4 | Steel | 71 | ✓ | 21,64 € |
| Version B | | | | | | | | | | | | | | | |
| LRR-50-B/ZN | 50 | 56 | 1,5 | 1,2 | 16 | 20 | 34 | 27 | 12 | 12 | 4 | Steel | 71 | ✓ | 21,64 € |

*Depending on availability - Dimensions in mm

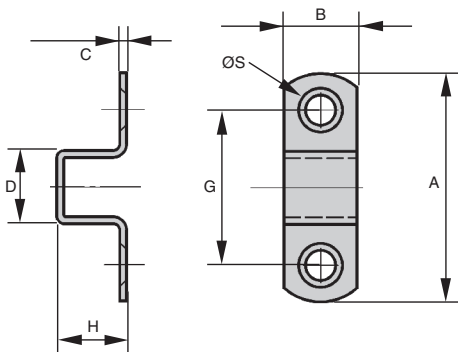
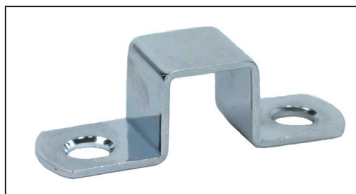
- Catch for sprung latch LRR

- Materials :

Galvanised steel

Accessory

- Spring loaded latch LRR (tome 5 p.212)



DISCOUNTS

| | | | | |
|------------|-----|-----|------------|-----|
| Qty | 1+ | 10+ | 20+ | 50+ |
| Disc. List | -3% | -5% | On request | |

| Part number | A | B | C | D | G | H | ØS | Material | Weight (g) | Stock ¹ | Price each 1 to 9 |
|---------------|----|----|-----|----|----|----|----|----------|------------|--------------------|-------------------|
| LRR-50-GPV/ZN | 50 | 16 | 1,5 | 16 | 34 | 16 | 4 | Steel | 12 | ✓ | 3,17 € |

*Depending on availability - Dimensions in mm

Our other products



FUSS
Bearing locknut, Self locking locknut - stainless steel lock washer



TMR
Rigid manual tensioner, Adjustable



PGT
Sliding profile, Sliding panel support



CLB_T
Die cast zinc clamping lever - male, Zamak



BC2
Panamech, Multi-Beam, Aluminium - with clamping jaw



CHA138
Screwed hinge with threaded insert, 138 degrees



PAP
Handle for aluminium profile, Ergonomic handle



PLM-C
Cylindrical holding magnets, Cylindrical holding magnet



SCA_SS
Stainless steel flat cable clamp, Stainless



E30
Right angle helical reducers, from 1.50 to



TAD
Threaded adjustable feet, Plastic and steel



BAC105
Storage bin, 8mm

Complementary products



LRR
Spring loaded latch, Spring loaded latch



LRR-53
Spring loaded latch, Spring return latch - steel



LRR-53
Spring loaded latch, Spring return latch - stainless steel



SER69K
Quarter turn latch for the food industry, Stainless steel