

- **Springloaded bolt can be held in unlocked position**

- It is recommended to combine 1 latch with 1 strike

- Materials:

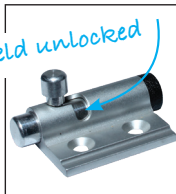
Body: aluminium 6060T5 clear anodised

Shaft and handle: raw aluminium

Cap: Black PE

Spring: Stainless steel

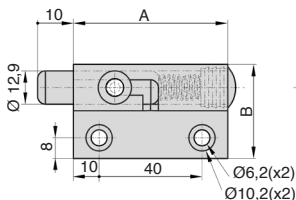
Strike: aluminium 5754 clear anodised



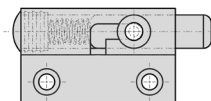
Springloaded bolt



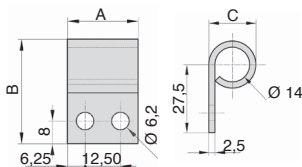
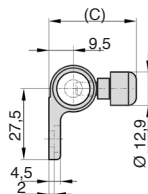
Strike



LRR-37-2/ALU



LRR-37-1/ALU



LRR-37-GPV/ALU

DISCOUNT

Qty	1+	10+	20+	50+
Disc. List	-3%	-5%	On request	

Part number	A	B	C	Type	Weight (g)	Stock*	Price each 1 à 9
Springloaded bolt							
LRR-37-2/ALU	60	36,5	34	2	58		
LRR-37-1/ALU	60	36,5	34	1	58		
Strike							
LRR-37-GPV/ALU	25	37	19	-	11		

*Depending on availability - Dimensions in mm

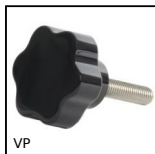
Our other products



PFM
Fixed levelling foot,
Flanged plate



GPLbr
Brush, brass



VP
Small 6 lobe threaded
handle - male,
Duroplast - Steel



BPM
Slotted spring plunger
with ball tip, Stainless
steel 303



GP75
Spring loaded toggle
latch, Standard
(GP75)



BS2
Panamech, Multi-
Beam, Aluminium -
with set screw



RURp
Fixed castor with
plate, Polyurethane -
Aluminium rim (Free
running)



PGT
Sliding profile, Sliding
panel support



J51
Spur gear coaxial
gearbox, from 0.13 to
50000



PW_PWG05
Wheel - precision
range, Bronze



BPLF
Ball transfer unit light
duty, Light



CHAFR-MINI
Miniature friction
hinge, Friction

Complementary products