

- **Springloaded bolt can be held in unlocked position**

- It is recommended to combine 1 latch with 1 strike

- Materials:

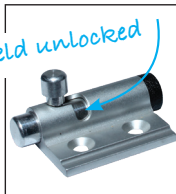
Body: aluminium 6060T5 clear anodised

Shaft and handle: raw aluminium

Cap: Black PE

Spring: Stainless steel

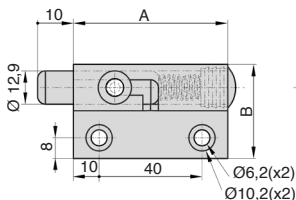
Strike: aluminium 5754 clear anodised



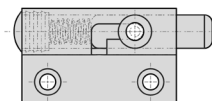
Springloaded bolt



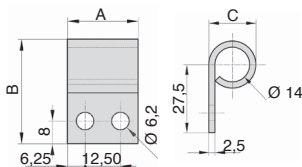
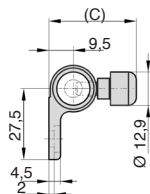
Strike



LRR-37-2/ALU



LRR-37-1/ALU



LRR-37-GPV/ALU

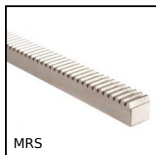
DISCOUNT

Qty	1+	10+	20+	50+
Disc. List	-3%	-5%	On request	

Part number	A	B	C	Type	Weight (g)	Stock*	Price each 1 à 9
Springloaded bolt							
LRR-37-2/ALU	60	36,5	34	2	58		
LRR-37-1/ALU	60	36,5	34	1	58		
Strike							
LRR-37-GPV/ALU	25	37	19	-	11		

*Depending on availability - Dimensions in mm

Our other products



MRS

Stainless steel metric section rack, Stainless steel



BPHF

Ball transfer unit push fit, Heavy



HBM

Adjustment bushing for half-rail guide, Adjustment bushing



ATZY

Diabolo shaped elasto mount, Steel



GMC_GMK_BR

Guiding profile clamp, Flat or rounded



TBD

Manual leadscrew table with opposing threads, 40kg



DOMI50

Connecting kits, XY linking kit



ZHBRA

Plastic bevel gear, 1,25:1 2:1 3:1



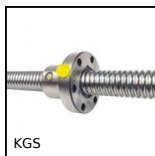
CM

Tools Hygienic Usit® and Hygienic



RT25

Self-centering flanged locking assembly,



KGS

Ball screw, supplied by the metre, Rolled



PW_PWG15

Worm - precision range, Steel

Complementary products