



Small dimension latch with locking system

In aluminium

LRR22

- **Springloaded bolt can be held in unlocked position**

- **Materials:**

Body: aluminium 6060T5 clear anodised

Shaft and handle: raw aluminium

Cap: Black PE

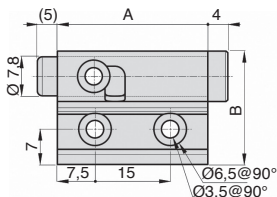
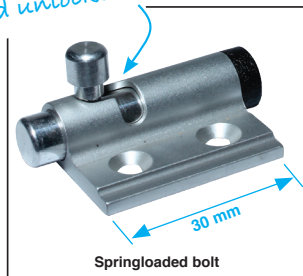
Spring: Stainless steel

Strike: aluminium 5754 clear anodised

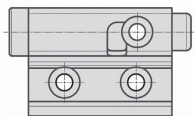
Note

There is no strike for this size

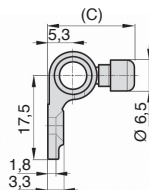
Held unlocked



Type 2
LRR-22-2/ALU



Type 1
LRR-22-1/ALU



DISCOUNT

Qty	1+	10+	20+	50+
Disc.	List	-3%	-5%	On request

Part number	A	B	C	Type	Weight (g)	Stock*	Price each 1 à 9
Springloaded bolt							
LRR-22-2/ALU	30	22,5	18,2	2	9	-	16,85 €
LRR-22-1/ALU	30	22,5	18,2	1	9	-	16,85 €

*Depending on availability - Dimensions in mm

Our other products



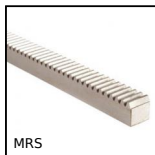
ESSB

Bipod support base,
Bipod support base



RPCplss

Fixed castor with
plate, Stainless steel -
Polyamide



MRS

Stainless steel metric
section rack, Stainless
steel



BCTH

Mushroom headed
button Hygienic
Usit®, With female
thread and high ...



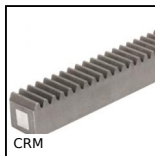
GE1006

Elastic ringed latch,
Hooks into a slot



LRRA

Latch with locking
system, Aluminium



CRM

Moulded nylon rack,
Nylon



BFM

Flanged bronze nut,
Bronze - 1 thread



CHT63

Asynchronous AC
motor 0.12 to 0.22kW,
0.12 to 0.22kW



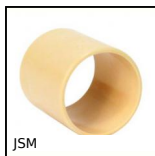
BSM_LOK

Long-Lok spring
plunger with internal
hexagonal socket,



AT10-50ECO

AT type timing pulley,
Economy range -
AT10 aluminium



JSM

Cylindrical polymer
bush, Universal
polymer

Complementary products