



Small dimension latch with locking system

In aluminium

LRR22

- **Springloaded bolt can be held in unlocked position**

- **Materials:**

Body: aluminium 6060T5 clear anodised

Shaft and handle: raw aluminium

Cap: Black PE

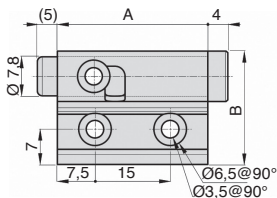
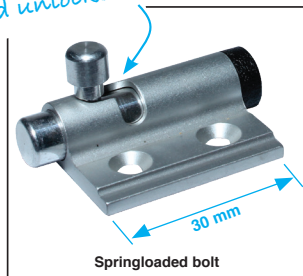
Spring: Stainless steel

Strike: aluminium 5754 clear anodised

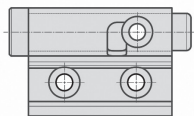
Note

There is no strike for this size

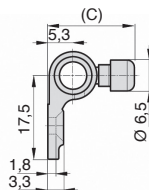
Held unlocked



Type 2
LRR-22-2/ALU



Type 1
LRR-22-1/ALU



DISCOUNT

Qty	1+	10+	20+	50+
Disc.	List	-3%	-5%	On request

Part number	A	B	C	Type	Weight (g)	Stock*	Price each 1 à 9
Springloaded bolt							
LRR-22-2/ALU	30	22,5	18,2	2	9	-	16,85 €
LRR-22-1/ALU	30	22,5	18,2	1	9	-	16,85 €

*Depending on availability - Dimensions in mm

Our other products



SLH-M

Nut for toggle clamp,
Round ended nut for
SLH/SLV clamp



HG8-ECO

Eco range Spur gear,
Steel C45



BLHT70

Right angled gearbox,
from 26 to128 Nm



PRF4590_E

Bracket for aluminium
profile, PRF4590



PSG1HC

Skive hobbed spur
gears - precision
range, Case hardened
steel 20NCD2



M0

Worm and wheel set,
Bronze



PCF4

Conical flexible
mount, Square base
plate



TK_UUOP

Topball self-aligning
linear bearing, Topball
self-aligning



SBF

Sealed flange bearing
unit for Food Industry,



DOMI80

Accessories, Plate



BOXdxh

Boxed set of threaded
dowel pins DIN7979D,



WSS

Symmetrical S shaped
hook, Steel

Complementary products