

Spring loaded latch

Stock Bra

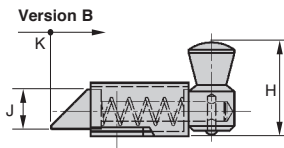
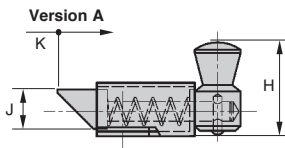
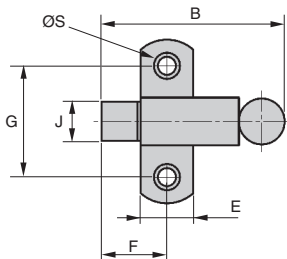
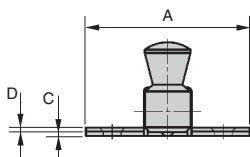
LRR

Plated steel

- Spring return latch
- Inward/outward opening versions available (A+ B versions)
- Materials : Galvanised steel

Accessory

- Catch plate LRRgpv (tome 5 p.213)



DISCOUNTS

Qty	1+	10+	20+	50+
Disc. List	-3%	-5%	On request	

Part number	A	B	C	D	E	F	G	H	J	K	ØS	Material	Weight (g)	Price each	
														Stock*	1 to 9
Version A															
LRR-50-A/ZN	50	56	1,5	1,2	16	20	34	27	12	12	4	Steel	71	✓	21,64 €
Version B															
LRR-50-B/ZN	50	56	1,5	1,2	16	20	34	27	12	12	4	Steel	71	✓	21,64 €

*Depending on availability - Dimensions in mm

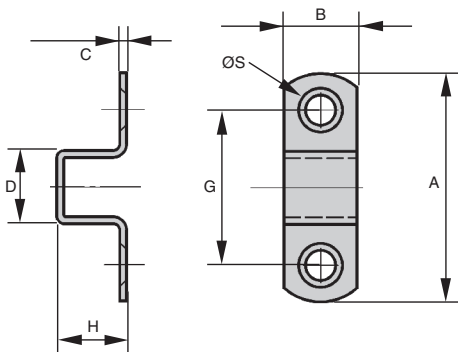
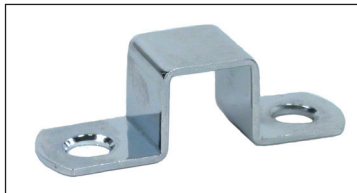
- Catch for sprung latch LRR

- Materials :

Galvanised steel

Accessory

- Spring loaded latch LRR (tome 5 p.212)



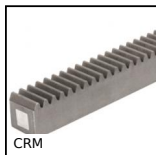
DISCOUNTS

Qty	1+	10+	20+	50+
Disc. List	-3%	-5%	On request	

Part number	A	B	C	D	G	H	ØS	Material	Weight (g)	Stock ¹	Price each 1 to 9
LRR-50-GPV/ZN	50	16	1,5	16	34	16	4	Steel	12	✓	3,17 €

*Depending on availability - Dimensions in mm

Our other products



CRM

Moulded nylon rack,
Nylon



SF_ZZ

Deep groove ball
bearing, Stainless
steel



PP60

Worm and wheel gear
reducer, from 17.80
to 34 Nm



HAS

Captive C washer,
Slotted flat headed
shoulder screw



ZG1

Plastic spur gear,
Machined plastic
(delrin)



GPBSS

Threaded spherical
knob, Stainless steel
304



BLHM30

Right angled gearbox,
double output shafts,
up to 4.4 Nm



BABFCFO

Ball pin socket,
Mounting collar with a
round flange



HTD5M_15

HTD Heavy duty
timing pulley, HTD5



S_2RS

Deep groove ball
bearing, Stainless



F7-P-AM

Multifunction display,
Magnetic band



PR40

Articulated foot Ø50,
Ø 50

Complementary products



LRRss

Latch, Spring loaded
latch - stainless steel



LRR

Spring loaded latch,
Spring loaded latch



LRR-53

Spring loaded latch,
Spring return latch -
stainless steel



LRR22

Small dimension latch
with locking system,
Aluminium