

# Spring loaded latch

Stock Bra

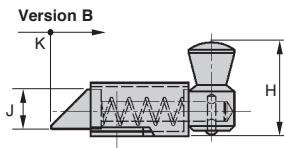
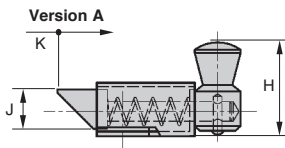
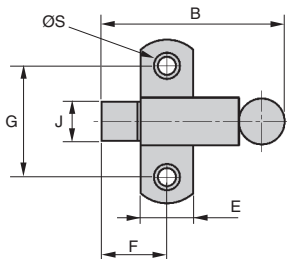
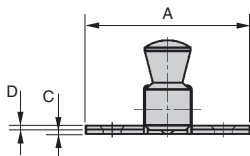
LRR

Plated steel

- Spring return latch
- Inward/outward opening versions available (A+ B versions)
- Materials : Galvanised steel

## Accessory

- Catch plate LRRgpv (tome 5 p.213)



## DISCOUNTS

Qty	1+	10+	20+	50+
Disc. List	-3%	-5%	On request	

Part number	A	B	C	D	E	F	G	H	J	K	ØS	Material	Weight (g)	Price each	
														Stock*	1 to 9
<b>Version A</b>															
LRR-50-A/ZN	50	56	1,5	1,2	16	20	34	27	12	12	4	Steel	71	✓	21,64 €
<b>Version B</b>															
LRR-50-B/ZN	50	56	1,5	1,2	16	20	34	27	12	12	4	Steel	71	✓	21,64 €

\*Depending on availability - Dimensions in mm

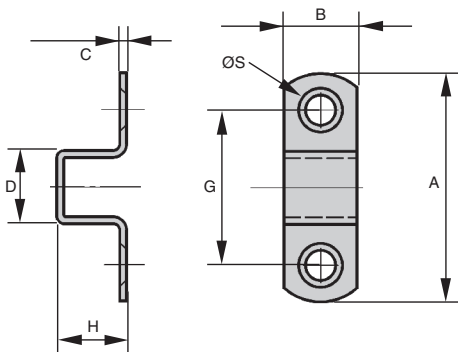
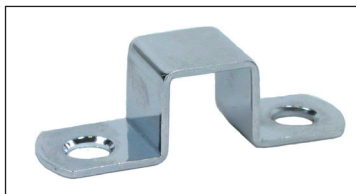
- Catch for sprung latch LRR

- Materials :

Galvanised steel

## Accessory

- Spring loaded latch LRR (tome 5 p.212)



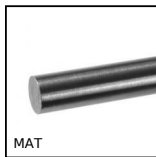
### DISCOUNTS

Qty	1+	10+	20+	50+
Disc. List	-3%	-5%	On request	

Part number	A	B	C	D	G	H	ØS	Material	Weight (g)	Stock <sup>1</sup>	Price each 1 to 9
LRR-50-GPV/ZN	50	16	1,5	16	34	16	4	Steel	12	✓	3,17 €

\*Depending on availability - Dimensions in mm

## Our other products



MAT

Drawn ground round bar, 100C6 steel bar



BLHM20

Right angled gearbox, double output shafts, up to 1.77 Nm



ACLEPP

Right angled bracket for aluminium profile, 8 holes



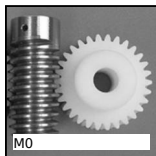
PAMF120

Articulated fixable foot, pressed bolt-down base  $\varnothing$  120,  $\varnothing$  120



SVG

Adjustable latch clamp with strike plate, Stroke from 174mm to 190mm



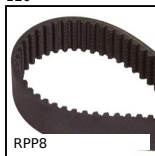
M0

Worm and wheel set, Machined plastic (delrin)



HD

Double needle roller universal joint, Heavy duty



RPP8

RPP heavy duty timing belt, RPP8



CHAE6555

Decorative screwed hinge, Aluminium



MCL

Cylindrical threaded sleeve, Cylindrical -



SHN

Hexagonal nut DIN934, Steel (Class



CF

Cam follower, Standard - steel

## Complementary products



LRR

Spring loaded latch, Spring loaded latch