

# Spring loaded latch

Stock Bra

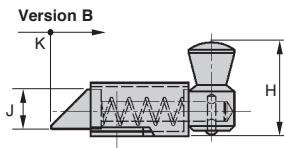
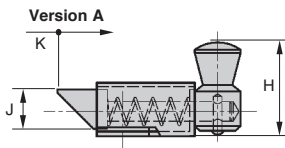
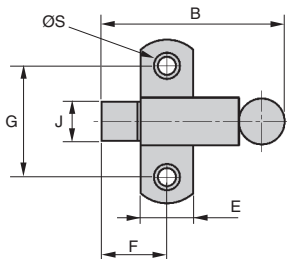
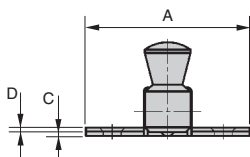
LRR

Plated steel

- Spring return latch
- Inward/outward opening versions available (A+ B versions)
- Materials : Galvanised steel

## Accessory

- Catch plate LRRgpv (tome 5 p.213)



## DISCOUNTS

Qty	1+	10+	20+	50+
Disc. List	-3%	-5%	On request	

Part number	A	B	C	D	E	F	G	H	J	K	ØS	Material	Weight (g)	Price each	
														Stock*	1 to 9
<b>Version A</b>															
LRR-50-A/ZN	50	56	1,5	1,2	16	20	34	27	12	12	4	Steel	71	✓	21,64 €
<b>Version B</b>															
LRR-50-B/ZN	50	56	1,5	1,2	16	20	34	27	12	12	4	Steel	71	✓	21,64 €

\*Depending on availability - Dimensions in mm

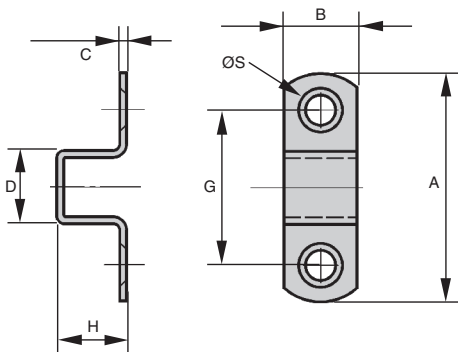
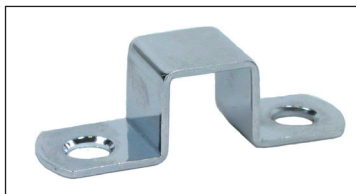
- Catch for sprung latch LRR

- Materials :

Galvanised steel

## Accessory

- Spring loaded latch LRR (tome 5 p.212)



### DISCOUNTS

Qty	1+	10+	20+	50+
Disc. List	-3%	-5%	On request	

Part number	A	B	C	D	G	H	ØS	Material	Weight (g)	Stock <sup>1</sup>	Price each 1 to 9
LRR-50-GPV/ZN	50	16	1,5	16	34	16	4	Steel	12	✓	3,17 €

\*Depending on availability - Dimensions in mm

## Our other products



DER63

Stainless steel AC asynchronous motor  
0.18 kW, 0.18kW



PSG25

Spur gear - precision range, Pre-hardened Steel 35NCD6



ACL

Joints for aluminium profile, Variable angle hinge



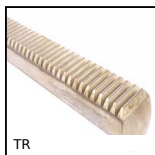
RPB

Ball screw bearing unit, Support



NPTF30

Spacer for tube carrier, Fixing accessory  $\varnothing 14$  to  $\varnothing 20$



TR

Spur round rack, Stainless steel - module 0,25-1,5



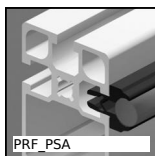
CHB

Single output shaft, For CHB gearbox



AZY\_SS

Stainless steel cylindrical elastomount, Stainless steel



PRF\_PSA

Shaft support for aluminium profile, Shaft support



DOMI50

Accessories, Plate



PRF\_CHA

Hinge for aluminium profile, Surface mounting hinge



PTA150

Articulated levelling foot, pressed base  $\varnothing 150$ ,  $\varnothing 150$

## Complementary products



LRRss

Latch, Spring loaded latch - stainless steel



LRR

Spring loaded latch, Spring loaded latch



LRR-53

Spring loaded latch, Spring return latch - stainless steel



LRR22

Small dimension system latch with locking system, Aluminium