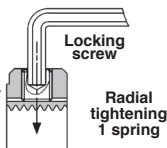


LR Precise adjustment - Radial locking

- Material : steel (high elastic limit)
- Slots: 4 at 90° spacing
- Perpendicularity of bore surface: \perp face/A: 0.005
- Screw: flat-headed Hc class 14.9
- Standard finish:
 - Threads right handed, class 4H
 - Engraved on opposite face

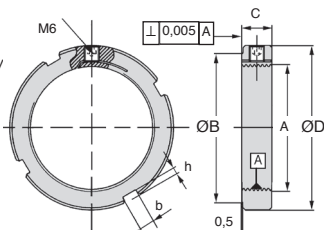
- Ground back face
- Blackened screws



Captive

Uses

- The LR nut can be used anywhere radial locking is possible.
- The radial effort produced by tightening the grub screw is exerted on the flexible key. The developed surface of the key's edges allows a very powerful grip to be exerted.
- The back face, perpendicular to the thread allows a bearing or other mechanical parts to be adjusted and tightened to within precise tolerances



Info

- The following values of tightening torque were obtained for different sized grub screws:
 - M6 screw torque 8Nm
 - M8 screw torque 18Nm
 - M10 screw torque 36Nm

DISCOUNTS

Qty	1+	6+	20+
Disc.	Listr	-10%	On request

Part number	Thread A	ØD	ØB	C	b x h	Grub screw	Unlocking torque (Nm)*	Admissible axial load (N)	Weight (kg)	Stock*	Price each 1 to 5
LR-1	12x100	24	19	12	4 x 2	M6	23	28500	0,030	✓	56,76 €
LR-2	14x100	26	21	12	4 x 2	M6	26	33500	0,035	✓	61,41 €
LR-3	15x100	30	25	12	4 x 2	M6	29	40500	0,045	✓	68,96 €
LR-4	17x100	32	27	12	4 x 2	M6	32	46100	0,055	-	69,52 €
LR-5	18x100	32	27	12	4 x 2	M6	37	49000	0,550	✓	70,10 €
LR-6	20x100	35	30	12	4 x 2	M6	42	54600	0,060	✓	70,70 €
LR-7	22x150	35	30	12	4 x 2	M6	47	56600	0,060	✓	71,27 €
LR-8	25x150	40	35	12	5 x 2	M6	53	67100	0,070	✓	71,84 €
LR-9	30x150	45	40	12	5 x 2	M6	59	81100	0,085	✓	72,42 €
LR-10	32x150	46	41	12	5 x 2	M6	65	92900	0,090	-	78,81 €
LR-11	35x150	50	45	12	5 x 2	M6	75	101900	0,095	✓	84,01 €
LR-12	38x150	52	47	12	5 x 2	M6	83	98000	0,100	-	85,18 €
LR-13	40x150	55	49	12	6 x 2,5	M6	94	104000	0,100	✓	91,55 €
LR-14	42x150	56	50	12	6 x 2,5	M6	105	109300	0,110	✓	97,37 €
LR-15	45x150	60	54	12	6 x 2,5	M6	118	119200	0,120	-	99,10 €
LR-16	50x150	65	59	12	6 x 2,5	M6	132	134900	0,130	✓	100,84 €
LR-17	52x150	67	61	12	6 x 2,5	M6	147	140400	0,130	-	103,16 €

*Depending of availability - Dimensions in mm

Advantages

- Accurate and firm securing of bearing
- Avoids the need for lock washers and any risk of damage to seals
- Locks nuts without losing accuracy
- Can be re-used many times without loss of accuracy
- Can be used in harsh environments (temperature, vibration, etc...)

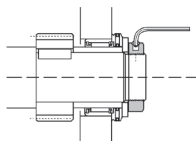
Assembly

- Nuts and key rings assemble easily using standard hook spanners (DIN 1810) that fit into slots around the edge of the nut
- Nuts easily removed by loosening the locking screws on the keys

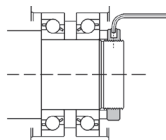
Info.

- Loosening torque and axial load values are for static assemblies.

Values are given as an indication only and HPC cannot be held responsible for their accuracy



Adjustment of a needle bearing on a drill spindle.



Preload adjustment of oblique contact ball bearings.

DISCOUNTS

Qty	1+	6+	20+
Disc.	Listr	-10%	On request

Part number	Thread A	ØD	ØB	C	b x h	Grub screw	Unlocking torque (Nm)*	Admissible axial load (N)	Weight (kg)	Stock*	Price each 1 to 5
LR-18	55x200	75	68	15	7x3,0	M8	512	168900	0,23	-	110,11 €
LR-19	60x200	80	73	15	7x3,0	M8	532	184600	0,25	-	112,45 €
LR-20	65x200	85	78	15	7x3,0	M8	560	203500	0,27	-	117,07 €
LR-21	70x200	90	82	15	8x3,5	M8	587	219500	0,28	✓	121,75 €
LR-22	75x200	95	87	15	8x3,5	M8	615	237000	0,30	-	128,70 €
LR-23	80x200	105	97	15	8x3,5	M8	650	255400	0,42	-	132,18 €
LR-24	85x200	110	102	15	8x3,5	M8	675	273300	0,44	-	133,93 €
LR-25	90x200	115	106	15	10x4,0	M8	713	292300	0,46	-	140,91 €
LR-26	95x200	120	111	15	10x4,0	M8	750	308800	0,49	-	141,48 €
LR-27	100x200	125	116	15	10x4,0	M8	790	325300	0,51	-	158,29 €
LR-28	105x200	130	119	15	12x5,0	M8	830	341700	0,52	-	161,19 €
LR-29	110x200	135	124	15	12x5,0	M8	870	358200	0,55	-	165,26 €
LR-30	115x200	140	129	15	12x5,0	M8	930	377000	0,57	-	177,45 €
LR-31	120x200	145	134	15	12x5,0	M8	960	394000	0,59	-	214,56 €
LR-33	130x200	155	144	15	12x5,0	M8	>2000	434400	0,65	-	247,67 €
LR-34	135x200	165	152	20	14x6,0	M10	>2000	677000	1,10	-	298,70 €
LR-35	140x200	170	157	20	14x6,0	M10	>2000	704400	1,13	-	308,60 €
LR-37	150x200	180	167	20	14x6,0	M10	>2000	757400	1,20	-	348,00 €

* Depending of availability - Dimensions in mm

Our other products



Magnetic stud with central countersunk hole, With milled bore



Pull handle, Thermoplastic



Numerical counter accessories, Operating knob



Hinge for aluminium profile, Hinge



Plastic clamping collar, Ø25 - Ø40



Suction cup, 2.5 bellows, nitrile



Adjustment bushing for half-rail guide, Adjustment bushing



Combined bearing without inner ring, Needle and cylindrical rollers



Worm and wheel set, Non hardened steel



Rigging screw (hook/eye), Steel



Straight track for slat top chain, Ranges 880

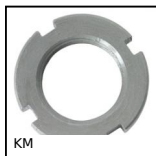


3 lobed handle, Polyamide - Brass

Complementary products



Precision locknut, Precision locknut



Bearing locknut, Locknut KM