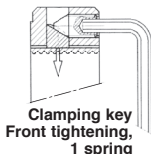


# Adjustable clamping nuts

## LF Precise adjustment – Front locking

### Material : steel (with high elastic limit)

- Notches : 4 at 90° spacing
- Screw(s) : Flat headed Hc (class 14.9)
- Standard finish :
- Right handed threads (class 4H) . Ground working face
- Engraved on reverse face . Blackened finish



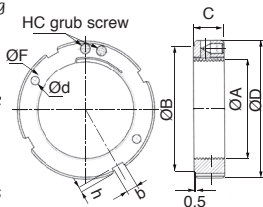
### Application

- The LF locking nut can be used wherever radial clamping is not possible. It is particularly recommended for components mounted inside holes or deep bores.
- The axial force created by the tightening of the screw is transmitted at 90° by the edges.
- The resulting radial force is applied to the clamping spring
- The contact surface perpendicular to the threaded side allows the adjustment and locking in place of different bearings or other mechanical elements requiring positioning under very precise tolerances.
- In addition to the lateral notches, the holes located on the front face allow positioning of the nut using a suitable spanner.

Captive

### Info.

- \* Following locking values were obtained for different sizes of locking screw
- M4 screw 2.5Nm torque      • M5 screw 5Nm torque
- M6 screw 8 Nm torque      • M8 screw 18Nm torque



### DISCOUNTS

Qty	1+	6+	20+
Disc.	Listr	-10%	On request

Part number	Thread		Screw HC*	Unlocking torque (Nm)	Max axial load (N)	Weight (kg)	Price each 1 to 5
	ØA	ØD					
LF-1	12 x 1,0	28	1	4	36200	0,050	74,51 €
LF-2	14 x 1,0	30		6	42600	0,055	80,78 €
LF-3	15 x 1,0	31	M4	6	51500	0,060	87,12 €
LF-4	17 x 1,0	33		7	58700	0,065	87,70 €
LF-5	18 x 1,0	34	2 screw	9	55400	0,070	87,70 €
LF-6	20 x 1,0	37		10	61800	0,080	88,28 €
LF-7	22 x 1,5	39	M4	12	64700	0,090	88,85 €
LF-8	25 x 1,5	43		15	80200	0,100	89,40 €
LF-9	30 x 1,5	48	2 screw	20	100600	0,120	89,97 €
LF-10	32 x 1,5	50		24	113500	0,125	95,74 €
LF-11	35 x 1,5	53	M5	29	118500	0,140	101,44 €
LF-12	38 x 1,5	56		35	124500	0,145	102,63 €
LF-13	40 x 1,5	58	2 screw	41	127100	0,150	109,52 €
LF-14	42 x 1,5	62		45	131300	0,175	115,22 €
LF-15	45 x 1,5	65	M5	55	143400	0,185	116,36 €
LF-16	50 x 1,5	69		70	165200	0,190	119,24 €

Dimensions in mm

## Advantages

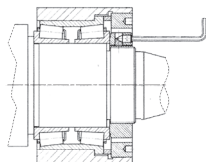
- An accurate and strong solution for securing bearings in their axial position after installation.
- Locking washers are no longer required thus reducing the risk of seal damage.
- The rings can be clamped and locked in place with no loss of axial precision.
- All threading and contact face machining operations are performed in one operation to ensure that squareness and minimum run-out is guaranteed.

## Assembly

- The rings are screwed into position using an appropriately sized hook spanner (DIN 1810) on the lateral slots.
- To disassemble, simply unscrew.

## Info.

- The values of locking torque and axial load given are for static assemblies. They are indicative purposes only and we decline any responsibility.



Typical application :  
Installation of a taper bearing  
on a machine tool spindle

## DISCOUNTS

Qty	1+	6+	20+
Disc.	Listr -10%	On request	

Part number	Thread	ØA	ØD	ØB	C	b x h	ØF	Ød	Screw	HC*	Unlocking torque (Nm)	Max axial load (N)	Weight (kg)	Price each 1 to 5
LF-18	55 x 2	75	68	15	7 x 3,0	65	4,2		2 screw	M5	105	241300	0,23	130,16 €
LF-19	60 x 2	80	73	20	7 x 3,0	72	4,2	130			263800	0,33	132,45 €	
LF-20	65 x 2	85	78	20	7 x 3,0	76	4,2		2 screw	M5	160	291000	0,35	138,77 €
LF-21	70 x 2	90	82	20	8 x 3,5	81	4,2	200			313900	0,36	142,92 €	
LF-22	75 x 2	95	87	20	8 x 3,5	86	4,2		2 screw	M6	220	347800	0,39	150,92 €
LF-23	80 x 2	105	97	20	8 x 3,5	93	5,2	240			371300	0,55	156,10 €	
LF-24	85 x 2	110	102	20	8 x 3,5	98	5,2		2 screw	M6	250	394900	0,57	158,36 €
LF-25	90 x 2	115	106	20	10 x 4	104	5,2	265			422500	0,60	164,06 €	
LF-26	95 x 2	120	111	20	10 x 4	107	5,2		2 screw	M6	295	446300	0,63	168,62 €
LF-27	100 x 2	125	116	20	10 x 4	114	5,2	325			470200	0,65	186,92 €	
LF-28	105 x 2	130	119	20	12 x 5	118	5,2		2 screw	M6	365	494000	0,68	188,09 €
LF-29	110 x 2	135	124	20	12 x 5	122	5,2	405			517800	0,72	196,68 €	
LF-30	115 x 2	140	129	20	12 x 5	127	5,2		2 screw	M8	450	545000	0,75	On request
LF-31	120 x 2	145	134	20	12 x 5	132	5,2	500			574300	0,78	260,12 €	
LF-33	130 x 2	155	144	20	12 x 5	142	5,2		2 screw	M8	635	626600	0,85	299,61 €
LF-35	140 x 2	170	157	22	14 x 6	155	6,2	1065			761900	1,20	374,54 €	
LF-37	150 x 2	180	167	22	14 x 6	165	6,2		2 screw	M8	1065	821700	1,30	399,11 €

Dimensions in mm

## Our other products



PSG3

Spur gear - precision range, Case hardened steel 20NCD2



PR105

Articulated foot  $\varnothing 103$ ,  $\varnothing 103$



PW\_PWG15

Wheel - precision range, Bronze



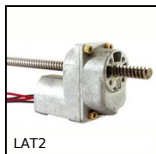
SH4

Parallel axis helical gear, Steel 20NCD2



DOMI50

Accessories, Fixing kit



LAT2

2A motorised linear actuator, 2 amperes



LPCM

Lever with cylindrical handle, Black Duroplast, steel lever



E60

Right angle helical reducers, from 4.50 to 62 Nm



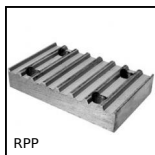
NPTF20

Spacer for tube carrier, Fixing accessory  $\varnothing 10$  to  $\varnothing 14$



BOXKU

Boxed set of half round (Woodruff) keys NFE22179, Boxed set of half ...



RPP

Connecting plate for RPP type timing belts, RPP8



MSP38

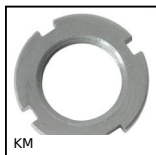
Masterplate® glueable insert  $\varnothing 38$ , Cylindrical  $\varnothing 38$  with threaded s...

## Complementary products



LR

Precision locknut, Precision locknut



KM

Bearing locknut, Locknut KM