

Friction torque limiter



LC

Max torque 30Nm to 240Nm

- Adjustable clutch

- Place the wheel (gear, pulley, chain sprocket) between the two friction disks and tighten/loosen the thread to achieve the torque setting required.

- Supplied with 2 spring washers

- Only one can be fitted for lower transmissible torque

- Supplied pre-bored

Material:

Steel

Friction disks do not contain asbestos



LC 40-50

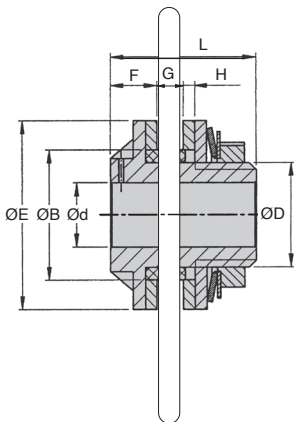
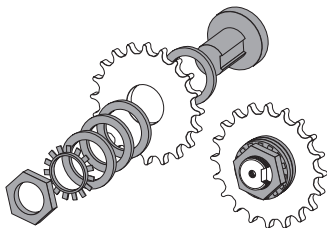
Option

- Bore and keyway to your specifications
(Mini order quantity: 30)

Info.

- Friction disks should never come into contact with oil as this could cause damage or affect the performance

- **Sprocket not supplied**



DISCOUNTS

Qty	1+	2+	5+
Disc. List	-5%	On request	

Part number	ØE	ØBh8	Ød	F	G max	H	ØD	L	N° springs	torque max (Nm)	Recommended sprocket Pitch	N° of teeth	Stock	Price each
LC40-2-7	40	26	7	9	6	3	22	30,0	1	15	3/8"	18-21		29,31 €
									2	28	1/2"	15	-	
LC50-2-7	50	35	7	10	6	3	32	35,5	1	30	3/8"	19-23		32,58 €
									2	55	1/2"	17	✓	

*Depending on availability - Dimensions in mm



Friction torque limiter

Max torque 190Nm to 1.800Nm

LC

- **Adjustable clutch**
- Place the wheel (gear, pulley, chain sprocket) between the two friction disks and tighten/loosen the thread to achieve the torque setting required.
- Supplied with 2 spring washers
- Only one can be fitted for lower transmissible torque
- Supplied pre-bored
- Material: Steel
- Friction disks do not contain asbestos



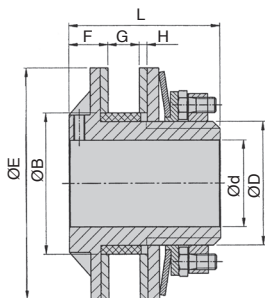
LC 65-85-95-120-140-170

Option

- Bore and keyway to your specifications (Mini order quantity: 30)

Info.

- Friction disks should never come into contact with oil as this could cause damage or affect the performance
- **Sprocket not supplied**



LC 65-85-95-120-140-170

DISCOUNTS

Qty	1+	2+	5+
Disc.	List	-5%	On request

Part number	ØE	ØBh8	Ød	F	G max	H	ØD	L	N° springs	torque max (Nm)	Recommended sprocket Pitch	N° of teeth	Stock*	Price each
LC65-2-10	65	45	10	16	9	4	36	53	1	70	3/8"	27	✓	47,17 €
								55	2	120	1/2" 5/8"	21 19		
LC85-2-15	85	52	15	16	11	4	45	59	1	130	3/8"	38	✓	59,26 €
								61	2	240	1/2" 5/8" 3/4"	25 21 18		
LC95-2-15	95	60	15	17	11	4	52	67	1	190	1/2"	30	-	88,49 €
									2	340	3/4"	25 19		
LC120-2-20	120	73	20	19	16	4	64	78	1	350	1/2" 5/8"	38 32	✓	105,00 €
									2	650	3/4" 1"	25 21		
LC140-2-20	140	90	20	22	17	4	85	86,5	1	650	3/4"	35	-	174,03 €
									2	1200	1"	21		
LC170-2-28	170	100	28	25,5	18,5	4,5	90	94	1	1000	3/4" 1"	35 25	-	206,98 €
									2	1800	1 1/4"	22		

*Depending on availability - Dimensions in mm

Our other products



FBL4004_K32

Brush strip per metre,
Black striated
polypropylene (PP)



E20

Right angle helical
reducers, from 0.60 to
3.84 Nm



LACT_SS

Adjustable Stainless
steel cam lever, Male



ZG1

Plastic spur gear,
Machined plastic
(delrin)



BLHT50

Right angled gearbox,
from 11.50 to 30 Nm



NPTR10

Adjustable cross
clamp, Adjustable



CAP820

Slim slat top chain
acetal, Narrow
straight range 820



GPB

Threaded spherical
knob, With brass
insert



PAS

Pull handle,
Reinforced PA
thermoplastic



HBM

Adjustment bushing
for half-rail guide,
Adjustment bushing



EMAS

Antistatic knurled nut,
Antistatic



VDSQCB

Sliding lock
adjustment system,
Blocking wedge

Complementary products



LC

Friction clutch, 190 to
1800 Nm



DSF

Slip friction clutch, 4
to 2600 Nm



VTA

Vari-Tork® slip
friction clutch, 0.53 to
1.32 Nm



VT

Vari-Tork® slip
friction clutch, 0.53 to
1.32 Nm