

- Self-aligning polymer bearing
- Two part assembly
- Temperature -40°C to +80°C (120°C for short periods)
- Slip speed: 0.5m/s
- Material:
 - Ring: Polymer iglidur® W300
 - Housing: Polymer igumid® G
- Pressure up to 20N/mm²



Advantages

- 20% of the weight of steel version
- Self-lubricating
- Large admissible load

Applications

- Compensates for alignment errors
- Oscillating parts

Maintenance free

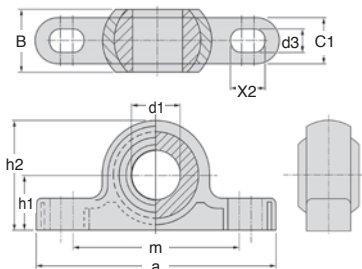
Part number	Max. static load for short life expectancy (N)	Max. static load for long life expectancy (N)	Max. static load in compression (N)
KSTM-05	700	350	500
KSTM-06	1100	550	700
KSTM-08	1300	650	1000
KSTM-10	1500	750	1100
KSTM-12	2200	1100	1150
KSTM-14	2400	1200	1200
KSTM-16	3000	1500	1800
KSTM-18	3500	1750	1900
KSTM-20	4700	2350	2500
KSTM-22	6100	3050	2700
KSTM-25	6600	3300	3200
KSTM-30	8100	4050	3750

Dimensions in mm

Avantages

- igubal® is self-lubricating
- Dry assembly
- No dirt collection
- Will not seize

- igubal® is suited to difficult environments
- Corrosion-resistant
- Resistant to chemicals
- High tolerance to vibration



DISCOUNTS

Qty	1+	6+	20+	40+	60+
Disc.	List	-10%	-15%	-20%	On request

Part number	a	Ød1 (E10)	B	C1	h1	h2	m	Ød3	X2	Pivot angle	Stock*	Price each 1 to 5
KSTM-05	34	5	8	6,0	7	14	25	3,3	5	30°	✓	7,46 €
KSTM-06	43	6	9	7,0	10	20	33	4,5	6	29°	✓	7,55 €
KSTM-08	47	8	12	9,0	10	20	33	4,5	7	25°	✓	7,65 €
KSTM-10	62	10	14	10,5	14	28	46	5,5	8	25°	✓	8,50 €
KSTM-12	65	12	16	12,0	14	28	46	5,5	9	25°	✓	10,09 €
KSTM-14	82	14	19	13,5	18	36	60	6,6	11	23°	✓	13,83 €
KSTM-16	86	16	21	15,0	18	36	60	6,6	12	23°	✓	12,85 €
KSTM-18	93	18	23	16,5	22	44	68	9,0	13	23°	-	21,72 €
KSTM-20	98	20	25	18,0	22	44	68	9,0	14	23°	✓	16,57 €
KSTM-22	108	22	28	20,0	24	48	74	9,0	16	22°	-	29,44 €
KSTM-25	124	25	31	22,0	27	54	86	9,0	17	22°	✓	28,54 €
KSTM-30	139	30	37	25,0	32	64	96	11,0	20	22°	✓	38,58 €

*Depending on availability - Dimensions in mm

Our other products



VTLM

3 lobed handle,
Polyamide - Steel



BOXsap

Boxed set of spring
pins ISO8752, Boxed
set - Split ISO 8752



PW_PWG15

Worm - precision
range, Stainless steel



ERC

Quick fitting cable
terminal, Eye version



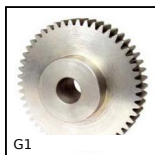
GAL22

Conveyor wheel, Zinc
plated steel



GP75

Spring loaded toggle
latch, Standard
(GP75)



G1

Steel spur gear, Steel
20NCD2



RCC_RCX

Spherical tilt washer -
DIN6319, concave



BABFCFO

Ball pin socket,
Mounting collar with a



ACAss

Stainless steel splined
shaft, Stainless steel



SSG1_304L

Stainless steel spur
gear, Stainless steel



IN2

Internal gear, Steel
20NCD2

Complementary products



EFSM

Igalub® flange
bearing, Polymer