

- Self-aligning polymer bearing
- Two part assembly
- Temperature -40°C to +80°C (120°C for short periods)
- Slip speed: 0.5m/s
- Material:
 - Ring: Polymer iglidur® W300
 - Housing: Polymer igumid® G
- Pressure up to 20N/mm²



Advantages

- 20% of the weight of steel version
- Self-lubricating
- Large admissible load

Applications

- Compensates for alignment errors
- Oscillating parts

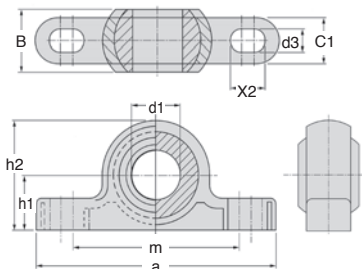
Maintenance free

Part number	Max. static load for short life expectancy (N)	Max. static load for long life expectancy (N)	Max. static load in compression (N)
KSTM-05	700	350	500
KSTM-06	1100	550	700
KSTM-08	1300	650	1000
KSTM-10	1500	750	1100
KSTM-12	2200	1100	1150
KSTM-14	2400	1200	1200
KSTM-16	3000	1500	1800
KSTM-18	3500	1750	1900
KSTM-20	4700	2350	2500
KSTM-22	6100	3050	2700
KSTM-25	6600	3300	3200
KSTM-30	8100	4050	3750

Dimensions in mm

Avantages

- igubal® is self-lubricating
- Dry assembly
- No dirt collection
- Will not seize
- igubal® is suited to difficult environments
- Corrosion-resistant
- Resistant to chemicals
- High tolerance to vibration



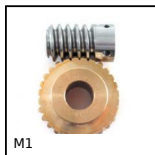
DISCOUNTS

Qty	1+	6+	20+	40+	60+
Disc.	List	-10%	-15%	-20%	On request

Part number	a	Ød1 (E10)	B	C1	h1	h2	m	Ød3	X2	Pivot angle	Stock*	Price each 1 to 5
KSTM-05	34	5	8	6,0	7	14	25	3,3	5	30°	✓	7,46 €
KSTM-06	43	6	9	7,0	10	20	33	4,5	6	29°	✓	7,55 €
KSTM-08	47	8	12	9,0	10	20	33	4,5	7	25°	✓	7,65 €
KSTM-10	62	10	14	10,5	14	28	46	5,5	8	25°	✓	8,50 €
KSTM-12	65	12	16	12,0	14	28	46	5,5	9	25°	✓	10,09 €
KSTM-14	82	14	19	13,5	18	36	60	6,6	11	23°	✓	13,83 €
KSTM-16	86	16	21	15,0	18	36	60	6,6	12	23°	✓	12,85 €
KSTM-18	93	18	23	16,5	22	44	68	9,0	13	23°	-	21,72 €
KSTM-20	98	20	25	18,0	22	44	68	9,0	14	23°	✓	16,57 €
KSTM-22	108	22	28	20,0	24	48	74	9,0	16	22°	-	29,44 €
KSTM-25	124	25	31	22,0	27	54	86	9,0	17	22°	✓	28,54 €
KSTM-30	139	30	37	25,0	32	64	96	11,0	20	22°	✓	38,58 €

*Depending on availability - Dimensions in mm

Our other products



Worm and wheel set,
Bronze



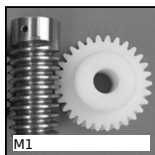
Connecting plate for T
type timing belts, T5



Self-locking nut, A2
Stainless steel



Miniature motorised
actuator 4A, 4 ampers



Worm and wheel set,
Machined plastic
(delrin)



Standard aluminium
profile, 45 x 32 mm



Plastic sprocket,
12.7mm (DIN 08B-1)



Miniature motorised
actuator 2A, 2 ampers



Adjusting rod for
clamp - Female, Bored



Knob star grip
antibacterial, Star,



Worm and wheel gear
reducer, up to 138



Diabolo shaped elasto
mount, Steel

Complementary products



Igubal® flange
bearing, Polymer