

Linear bearing with inclined ball tracks

KKB

High temperature

- A linear bearing with an inclined ball track suitable for standard loads.

- Working temperature range: -20 to +200°C

- Can be used with only a light lubrication

- Sealing joints included

- Materials:

Outer housing and balls: steel

Raceway: bronze

Seal: VITON®

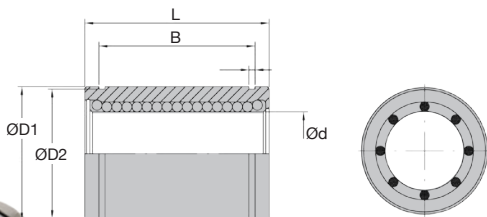


Advantages

- Higher working load compared to standard bearings

- No risk of marking the shaft

- Suitable for high temperatures



DISCOUNTS

Qty	1+	5+	10+	25+
Disc.	List	-6%	-12%	On request

Part N°	ød	ØD1	L	B	W	øD2	Load		Weight (g)	Price each
							Dynamic C(N)	Static Co(N)		
KKB-12AR	12 ^{0/+0,008}	22 ^{0/+0,008}	32 ^{0/-0,2}	22,9 ^{0/-0,2}	1,3	21	580	895	52	92,71 €
KKB-16AR	16 ^{0/+0,009}	26 ^{0/+0,009}	36 ^{0/-0,2}	24,9 ^{0/-0,2}	1,3	24,9	770	1180	75	103,88 €
KKB-20AR	20 ^{0/+0,009}	32 ^{0/+0,009}	45 ^{0/-0,2}	31,5 ^{0/-0,2}	1,6	30,3	1190	1910	140	111,75 €
KKB-25AR	25 ^{0/+0,011}	40 ^{0/+0,011}	58 ^{0/-0,3}	44,1 ^{0/-0,3}	1,85	37,5	1690	2720	298	150,18 €
KKB-30AR	30 ^{0/+0,011}	47 ^{0/+0,011}	68 ^{0/-0,3}	52,1 ^{0/-0,3}	1,85	44,5	2210	3880	445	201,28 €
KKB-40AR	40 ^{0/+0,013}	62 ^{0/+0,013}	80 ^{0/-0,3}	60,6 ^{0/-0,3}	2,15	59	2460	4620	1025	252,58 €

All dimensions in mm

Our other products



BSM

Spring plunger with internal hexagonal socket, stainless steel 303 b...



SH0

Parallel axis helical gear, Steel 20NCD2



TMR

Rigid manual tensioner, Adjustable



BOX-TOR-DRING

Box set of Nitrile D-rings NBR90Sh A, Flange seals



DER80

Stainless steel AC asynchronous motor 0.55 - 0.75kW, 0.55 to 0.75kW



BCM_MPBT

Modular cylindrical brush, PBT polyester bristles



SBRtool

Chain tool, Drive chain maintenance tools



CLLCLLP

Clevis components, long version, Steel - long range



GLT3-46A

Telescopic drawer with damper,



RJUM05

Drylin R® linear bearing housing,



WW20

Drylin® W slide, slide assembly



BAC110

Swivel storage bin, Adjustable support

Complementary products



KKP-AR

Linear bearing with inclined ball tracks, Heavy loads / -20° +200°



ZA

Shaft for linear guides, Hardened ground steel



ZB

Shaft for linear guides, Hardened ground stainless steel



KB_UU

Closed linear precision bearing, Precision - steel