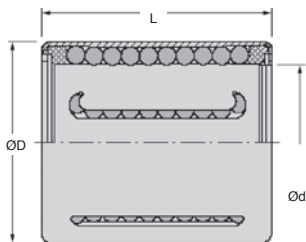


- **Compact cylindrical bearing**
- With integrated seals
- Material:
  - Housing: Pressed sheet steel
  - Balls: Steel 70 HRC +/-2
- Only for linear movement (not rotation)



Part number	normal backlash		reduced backlash	
	bore	shaft	bore	shaft
Steel or cast iron housing	H7	h6	H6	j7
Light alloy housing	K7	h6	K6	j5

### DISCOUNTS

Qty	1+	5+	10+	25+
Disc. List	-6%	-12%	On request	

Part number	Ød (mm)	OD (mm)	L (mm)	Weight (g)	Loads		Stock*	Price each 1 to 4
					Dynamic Cr (N)	Static Co (N)		
KH12-28-LL	12	19	28	18,5	605	495	✓	14,05 €
KH14-28-LL	14	21	28	20,5	600	505	✓	14,34 €
KH16-30-LL	16	24	30	27,5	775	600	✓	16,29 €
KH20-30-LL	20	28	30	32,5	1050	880	✓	14,73 €
KH25-40-LL	25	35	40	66,0	1830	1560	✓	18,03 €
KH30-50-LL	30	40	50	95,0	2700	2450	✓	25,29 €
KH40-60-LL	40	52	60	182,0	4250	4000	✓	42,92 €
KH50-70-LL	50	62	70	252,0	5300	5700	-	60,00 €

\*Depending on availability - Dimensions in mm

## Our other products



MHQMEP

Arm with rotating handle, Square bore



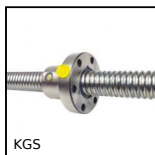
BAN

Angular clamp, Universal



LBE

Miniature closed linear bearing, Miniature



KGS

Ball screw, supplied by the metre, Rolled ball screw, per metre



DGSA

Male rod ends , Steel / steel - Economy range



UCFL PBT

Stainless steel/Polymer flanged bearing, Polymer and stainless steel



GARQT

Quarter turn lock pin for clamping, Quarter turn



BSP

Compact precision slide, from 156 N to 980 N



GBS

Nut for ballscrew, Flanged ballscrew nut



SLB

Indexing plunger, stainless steel



NDS20

Double cross clamp, Crossed



BEK

Bearing housing for miniature ballscrew, Bearing housing

## Complementary products



ZA

Shaft for linear guides, Hardened ground steel



FGWA

End support, With base