

- **Stainless steel range**
- Smooth and bushes
- Suitable for speeds up to 800 rpm
- Max. angle of misalignment 45°
- Material:
Stainless steel X5CrNi1810



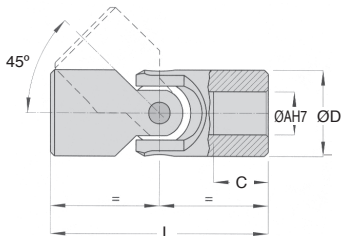
Uses

- Food and pharmaceutical industries

Accessories

- Optional rubber cover

Modifiable bore



Angle Factor

5°	1,25
10°	1,00
20°	0,75
30°	0,45
40°	0,30

Effect of operating angle

The torques below are given for a 10° angle. For other angles, the appropriate factor from this table should be applied. E.g. For 10Nm to be transmitted at 20°, the corrected value of torque becomes $10/0.75 = 13.3$ Nm and a joint should be chosen that can transmit 13.3Nm at the required speed.

DISCOUNTS

Qty	1+	2+	4+	10+
Disc.	List	-6%	-12%	On request

Part number	ØD	ØA	C	L	Torque (Nm)								Stock*	Price each
					at 100 rpm	at 200 rpm	at 300 rpm	at 400 rpm	at 500 rpm	at 700 rpm	at 800 rpm			
JCS00/SS	10	5	15	44	5,4	4,9	4,2	3,7	3,4	-	-	✓	46,11 €	
JCS01/SS	13	6	18	50	6,6	6,6	5,2	4,8	4,3	-	-	✓	42,24 €	
JCS02/SS	16	8	19	58	12,9	9	7,9	6,9	6	5,1	4,6	✓	42,24 €	
JCS03/SS	22	10	25	76	18,4	12,4	10,5	9,6	8,7	7,8	5,2	✓	42,24 €	
JCS04/SS	25	12	29	86	31,5	18,9	15	12	10,9	9,4	8,7	✓	48,02 €	
JCS05/SS	29	14	30	90	49,5	31,9	28,9	26,4	24,4	19,9	18,9	✓	49,95 €	
JCS06/SS	32	16	30	95	67,5	63	52,9	42	37,9	30	25,9	✓	51,85 €	
JCS07/SS	37	18	35	108	114	90	69,9	52,9	43,9	34,9	-	-	61,48 €	
JCS08/SS	40	20	32	108	175,5	126	87,9	69,9	61,9	43,9	-	✓	67,25 €	
JCS09/SS	47	22	38	127	219	144	105	87,9	69,9	52,9	-	-	84,59 €	
JCS10/SS	50	25	44	140	288	180	126	108	90	72	-	✓	100,03 €	
JCS11/SS	58	30	58	178	324	198	144	117	99	-	-	✓	130,81 €	

*Depending on availability - Dimensions in mm

Our other products



DBL821
Idler for slat top chain, Range 821



NK1B
Combined bearing with inner ring, Axial load in both directions



DOMI50
Accessories, Clamping lever



HLA19
Right angle spiro bevel gearbox, Up to 43Nm



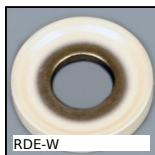
SUPss
Self-centering clamping hub stainless steel, Without locknut



MSP38
Masterplate® glueable insert Ø38, Cylindrical Ø38 with tapped ins...



PSG1
Spur gear - precision range, Pre-hardened Steel 35NCD6



RDE-W
Sealing washer Hygienic Usit®, Stainless steel - White EPDM



T25-6ECO
T type timing pulley, Economy range - T2.5



SHTP
Drylin® Linear table, Economy range



KKP-AR
Linear bearing with inclined ball tracks,



Q6
Deep groove ball bearing, Steel

Complementary products



JCDss
Double universal joint - Stainless steel, Low duty



H02SS
Needle roller universal joint - Stainless steel, Heavy duty DIN808-7...



M
Bellows cover, Accessory:



Gal-cardan
Single universal joint eco series, Low duty