

- **Stainless steel range**
- Smooth and bushes
- Suitable for speeds up to 800 rpm
- Max. angle of misalignment 45°
- Material:
Stainless steel X5CrNi1810



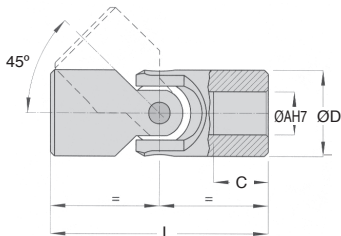
Uses

- Food and pharmaceutical industries

Accessories

- Optional rubber cover

Modifiable bore



Angle Factor

5°	1,25
10°	1,00
20°	0,75
30°	0,45
40°	0,30

Effect of operating angle

The torques below are given for a 10° angle. For other angles, the appropriate factor from this table should be applied. E.g. For 10Nm to be transmitted at 20°, the corrected value of torque becomes $10/0.75 = 13.3$ Nm and a joint should be chosen that can transmit 13.3Nm at the required speed.

DISCOUNTS

Qty	1+	2+	4+	10+
Disc.	List	-6%	-12%	On request

Part number	ØD	ØA	C	L	Torque (Nm)								Stock*	Price each
					at 100 rpm	at 200 rpm	at 300 rpm	at 400 rpm	at 500 rpm	at 700 rpm	at 800 rpm			
JCS00/SS	10	5	15	44	5,4	4,9	4,2	3,7	3,4	-	-	✓	46,11 €	
JCS01/SS	13	6	18	50	6,6	6,6	5,2	4,8	4,3	-	-	✓	42,24 €	
JCS02/SS	16	8	19	58	12,9	9	7,9	6,9	6	5,1	4,6	✓	42,24 €	
JCS03/SS	22	10	25	76	18,4	12,4	10,5	9,6	8,7	7,8	5,2	✓	42,24 €	
JCS04/SS	25	12	29	86	31,5	18,9	15	12	10,9	9,4	8,7	✓	48,02 €	
JCS05/SS	29	14	30	90	49,5	31,9	28,9	26,4	24,4	19,9	18,9	✓	49,95 €	
JCS06/SS	32	16	30	95	67,5	63	52,9	42	37,9	30	25,9	✓	51,85 €	
JCS07/SS	37	18	35	108	114	90	69,9	52,9	43,9	34,9	-	-	61,48 €	
JCS08/SS	40	20	32	108	175,5	126	87,9	69,9	61,9	43,9	-	✓	67,25 €	
JCS09/SS	47	22	38	127	219	144	105	87,9	69,9	52,9	-	-	84,59 €	
JCS10/SS	50	25	44	140	288	180	126	108	90	72	-	✓	100,03 €	
JCS11/SS	58	30	58	178	324	198	144	117	99	-	-	✓	130,81 €	

*Depending on availability - Dimensions in mm

Our other products



ACL-PR

Joining plate for aluminium profile, Right angled connection



SEH

Horizontal stirrup toggle clamp, Horizontal Latch clamp - stainless ...



SVT30

Screwjack with travelling screw, with translating screw



SH1

Parallel axis helical gear, Machined plastic (delrin)



CHM110

Worm and wheel gear reducer, up to 980 Nm



E60

Right angle helical reducers, from 4.50 to 62 Nm



SERB

Cam latch, Cam latch



CHMR30

Worm and wheel gear reducer, up to 28 Nm



CHTRB

Single and dual output gearboxes, Up



ASM

Cylindrical polymer bush, Food grade



SHS

Shoulder screw stainless steel 303,



ZDB

Machined plastic bevel gear, 2:1

Complementary products



JCDss

Double universal joint - Stainless steel, Low duty



H02SS

Needle roller universal joint - Stainless steel, Heavy duty DIN808-7...



M

Bellows cover, Accessory:



Gal-cardan

Single universal joint eco series, Low duty