

Steel or **machined** plastic

MODULE  
**2.0**



- Pressure angle 20°
- Materials:  
steel 34C10 or  
delrin plastic (machined parts)

### Options

- Alternative number of teeth
- Alternative materials (stainless steel, brass..)

### Accessories

- Spur gears with the same module eg G2.., ZG2..

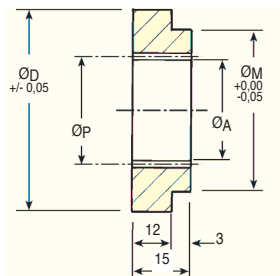


IN: Steel



ZIN: Plastic

**NEW!**



### STEEL DISCOUNTS

|       |           |      |            |     |
|-------|-----------|------|------------|-----|
| Qty.  | 1+        | 6+   | 20+        | 40+ |
| Disc. | List -12% | -25% | On request |     |

### PLASTIC DISCOUNTS

|       |           |            |     |
|-------|-----------|------------|-----|
| Qty.  | 1+        | 6+         | 30+ |
| Disc. | List -22% | On request |     |

| STEEL IN                               | PLASTIC ZIN | Z<br>Teeth | PCD Part number<br>Internal |     | Boss<br>ØM | Price each 1 to 5 |                   |
|--|-------------|------------|-----------------------------|-----|------------|-------------------|-------------------|
|  |             |            | ØP                          | ØA  |            | STEEL IN          | PLASTIC ZIN       |
| IN2-40                                 | ZIN2-40     | 40         | 80                          | 76  | 150        | 125               | 96,05 € 67,23 €   |
| IN2-60                                 | ZIN2-60     | 60         | 120                         | 116 | 175        | 150               | 149,65 € 104,75 € |
| IN2-80                                 | ZIN2-80     | 80         | 160                         | 156 | 220        | 200               | 196,94 € 137,86 € |
| IN2-100                                | ZIN2-100    | 100        | 200                         | 196 | 250        | 220               | 253,33 € 177,33 € |
| <b>Gears available up to this size</b> |             |            |                             |     |            |                   |                   |
| IN2-110                                | ZIN2-110    | 110        | 220                         | 216 | 280        | 250               | 295,14 € 206,60 € |

Dimensions in mm

## Our other products



IN2  
Internal gear, Steel  
20NCD2



HTD3M\_09  
HTD Heavy duty  
timing pulley, HTD3  
Aluminium



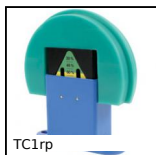
MLY\_SS  
Stainless steel bow  
shackle with eye bolt,  
Stainless steel



TPEF  
Castor for aluminium  
profile, Fixed



HSS  
Shoulder screw  
ISO7379, Hardened  
Steel class 12.9



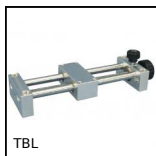
TC1rp  
Automatic chain  
tensioner, With 180°  
guide



SDG  
Adjustable guide  
support bracket,  
Plastic



MEB  
Moulded plastic bevel  
gear (nylon), 1:1



TBL  
Mini leadscrew table  
with metric thread,  
1kg



BMM  
Knurled knob - male,  
Knurled



INS\_BR  
Self tapping brass  
insert, Brass



CLASS  
Stainless steel  
indexing handle -  
male, Stainless steel

## Complementary products



IN2  
Internal gear, Steel  
20NCD2



ZG2  
Plastic spur gear,  
Machined plastic  
(delrin)



CLG2  
Moulded plastic spur  
gear, Moulded plastic  
(nylon)