

Steel or **machined** plastic

MODULE
2.0



- Pressure angle 20°
- Materials:
steel 34C10 or
delrin plastic (machined parts)

Options

- Alternative number of teeth
- Alternative materials (stainless steel, brass..)

Accessories

- Spur gears with the same module eg G2.., ZG2..

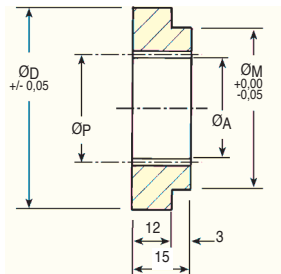


IN: Steel



ZIN: Plastic

NEW!



STEEL DISCOUNTS

Qty.	1+	6+	20+	40+
Disc.	List -12%	-25%	On request	

PLASTIC DISCOUNTS

Qty.	1+	6+	30+
Disc.	List -22%	On request	

STEEL IN	PLASTIC ZIN	Z Teeth	PCD ØP	Part number Internal ØA	ØD	Boss ØM	Price each 1 to 5	STEEL IN	PLASTIC ZIN
IN2-40	ZIN2-40	40	80	76	150	125	96,05 €	67,23 €	
IN2-60	ZIN2-60	60	120	116	175	150	149,65 €	104,75 €	
IN2-80	ZIN2-80	80	160	156	220	200	196,94 €	137,86 €	
IN2-100	ZIN2-100	100	200	196	250	220	253,33 €	177,33 €	
Gears available up to this size									
IN2-110	ZIN2-110	110	220	216	280	250	295,14 €	206,60 €	

Dimensions in mm

Our other products



BABpss
301 Stainless steel ball pin, Stainless steel



CHAR7520
Spring hinge, screwed



DTR
Chain idler sprocket, Chain idler sprocket - Plastic



TCC
Rigging screw (hook/hook), Steel



CHB
Single output shaft, For CHB gearbox



HRV
V- rail guidance Simple Select® system, Rail with carriage



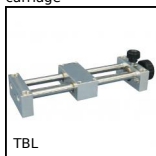
BLHM30
Right angled gearbox, double output shafts, up to 4.4 Nm



PTMC
Telescopic furniture foot, square plate



MRS
Stainless steel metric section rack, Stainless



TBL
Mini leadscrew table with metric thread,

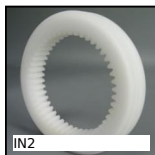


SLB
Indexing plunger, steel class 5.8



PRF_GAL
Roller for aluminium profile, Flat roller

Complementary products



IN2
Internal gear, Machined plastic (delrin)



G2
Steel spur gear, Steel 20NCD2



GG2
Ground spur gear, Heat treated steel