

# Internal gear



MODULE

Steel or **machined** plastic

# 1.0



- Pressure angle 20°
- Materials:  
steel 34C10 or  
delrin plastic (machined parts)

## Options

- Alternative number of teeth  
(minimum 58 teeth)
- Alternative materials (stainless  
steel, brass..)

## Accessories

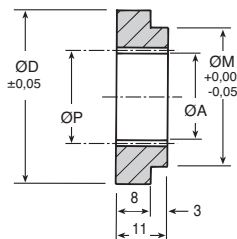
- Spur gears with the same module  
eg G1.., ZG1..



IN: Steel



ZIN: Plastic



## STEEL DISCOUNTS

Qty.	1+	6+	20+	40+
Disc.	List -12%	-25%	On request	

## PLASTIC DISCOUNTS

Qty.	1+	6+	30+
Disc.	List -22%	On request	

STEEL IN	PLASTIC ZIN	Z Teeth	PCD ØP	Part number internal ØA	ØD	Boss ØM	Price each 1 to 5	
							STEEL IN	PLASTIC ZIN
IN1-58	ZIN1-58	58	58	56	100	94	60,97 €	43,90 €
IN1-60	ZIN1-60	60	60	58	100	94	61,75 €	44,45 €
IN1-100	ZIN1-100	100	100	98	150	125	105,97 €	76,29 €
<b>Gears available up to this size</b>								
IN1-200	ZIN1-200	200	200	198	250	225	on request	on request

Dimensions in mm

## Our other products



PRF\_CH

Cable-carrier chain for aluminium profile, Supplied in metre lengths



CHTRP

Single and dual output gearboxes, Up to 75,7 Nm



INS\_SS

Self tapping stainless steel insert, Stainless steel



UTKswr

Utilitak® V rail, V rail



BH02

Single housed bearing assembly, Bearing secured with circlips



ADL\_M

Male eye bolt conforming to DIN580, Stainless steel



RTE

Rotex®, jaw coupling, Aluminium



BPP

Pressed steel flanged bearing for light loads, Sheet steel



GE

Toggle latches, Miniature



ES

Bipod support base, Plastic



RAS

90° ball and socket joints DIN71802, Steel



PSG3

Spur gear - precision range, Pre-hardened Steel 35NCD6

## Complementary products



IN1

Internal gear, Machined plastic (delrin)



G1

Steel spur gear, Steel 20NCD2



GG1

Ground spur gear, Heat treated steel