

Steel or **machined** plastic

Module



- Pressure angle 20°
- Materials:  
steel 20NCD2 or  
delrin plastic (machined parts)

## Accessories

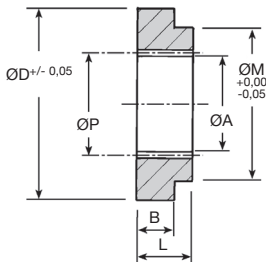
- Spur gears with the same module ex  
G0,4..., ZG0,4...,G2, ZG2...



IN : Steel



ZIN : Delrin



## DISCOUNT Steel

Qty	1+	6+	20+	40+
Disc.	List -12%	-25%	On request	

## DISCOUNT Delrin

Qty	1+	6+	30+
Disc.	List -22%	On request	

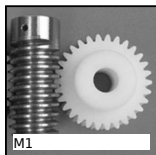
Part number		Z	PCD	Internal	ØD	L	B	Boss ØM	Price each 1 to 5	
Steel IN	Delrin ZIN	teeth	ØP	ØA					Steel IN	Delrin ZIN
<b>Module 1.5</b>										
IN1.5-41	ZIN1.5-41	41	61,5	58	100	15	12	94	86,73 €	62,33 €
IN1.5-60	ZIN1.5-60	60	90,0	87	150	15	12	125	133,33 €	95,90 €
IN1.5-100	ZIN1.5-100	100	150,0	147	200	15	12	175	225,72 €	173,99 €
<b>Module 2.0</b>										
IN2-40	ZIN2-40	40	80	76	150	15	12	125	119,74 €	83,80 €
IN2-60	ZIN2-60	60	120	116	175	15	12	150	186,56 €	130,58 €
IN2-80	ZIN2-80	80	160	156	220	15	12	200	245,54 €	171,85 €
IN2-100	ZIN2-100	100	200	196	250	15	12	220	315,84 €	221,08 €

Dimensions in mm

## Our other products



NKIB  
Combined bearing with inner ring, Axial load in both directions



M1  
Worm and wheel set, Machined plastic (delrin)



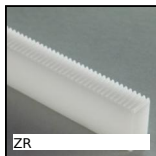
VT  
Vari-Tork® slip friction clutch, 0.53 to 1.32 Nm



GLT3-46  
Telescopic drawer,



CTZY  
Diabolo shaped elastomount, Steel



ZR  
Plastic rack, Delrin



STL  
Guidance brush - Rail, Rail



DKN  
Bellows coupling Gerwah®, from 0.4 to 10Nm



D19\_D29  
Compression springs in metre length



VPRA\_M  
Handwheel with handle,



CQA20  
Adjustment slide-system miniature, 20



CHCSS  
Socket headed screw, Stainless steel - A2

## Complementary products



IN1  
Internal gear, Steel 20NCD2



ZG1  
Plastic spur gear, Machined plastic (delrin)



CLG1  
Moulded plastic spur gear, Moulded plastic (nylon)