

# Internal gear



MODULE

Steel or **machined** plastic

# 1.0



- Pressure angle 20°
- Materials:  
steel 34C10 or  
delrin plastic (machined parts)

## Options

- Alternative number of teeth  
(minimum 58 teeth)
- Alternative materials (stainless  
steel, brass..)

## Accessories

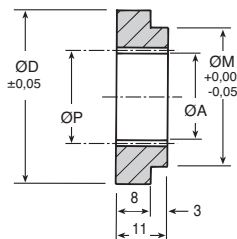
- Spur gears with the same module  
eg G1.., ZG1..



IN: Steel



ZIN: Plastic



## STEEL DISCOUNTS

Qty.	1+	6+	20+	40+
Disc.	List -12%	-25%	On request	

## PLASTIC DISCOUNTS

Qty.	1+	6+	30+
Disc.	List -22%	On request	

STEEL IN	PLASTIC ZIN	Z Teeth	PCD ØP	Part number internal ØA	ØD	Boss ØM	Price each 1 to 5	
							STEEL IN	PLASTIC ZIN
IN1-58	ZIN1-58	58	58	56	100	94	60,97 €	43,90 €
IN1-60	ZIN1-60	60	60	58	100	94	61,75 €	44,45 €
IN1-100	ZIN1-100	100	100	98	150	125	105,97 €	76,29 €
<b>Gears available up to this size</b>								
IN1-200	ZIN1-200	200	200	198	250	225	on request	on request

Dimensions in mm

## Our other products



PAM\_SS  
Stainless steel articulated levelling foot, Ø 30 & 40



TCL-ECL  
Adjusting nut, Fine thread



JSM  
Cylindrical polymer bush, Universal polymer



M0  
Worm and wheel set, Hardened steel



GCH  
Linear ball slide Eco Range, economy range



SHA  
Handwheel without handle, Polyamide



PRF1932  
Standard aluminium profile, 19 x 32 mm



CHA1056\_U4  
Screw-in hinge, Section 40X40



CHA35  
Hinge for aluminium profile, Hinge



RAGFLOWsupport  
Floway2® Roller track accessory, Roller track support



KB\_OP  
Open precision linear bearing, Precision - steel



MCL  
Cylindrical threaded sleeve, Cylindrical - stainless steel

## Complementary products



IN1  
Internal gear, Steel 20NCD2



ZG1  
Plastic spur gear, Machined plastic (delrin)



CLG1  
Moulded plastic spur gear, Moulded plastic (nylon)