

Steel or **machined** plastic

Module



- Pressure angle 20°
- Materials:
steel 20NCD2 or
delrin plastic (machined parts)

Accessories

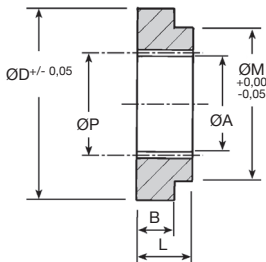
- Spur gears with the same module ex
G0,4..., ZG0,4...,G2, ZG2...



IN : Steel



ZIN : Delrin



DISCOUNT Steel

Qty	1+	6+	20+	40+
Disc.	List -12%	-25%	On request	

DISCOUNT Delrin

Qty	1+	6+	30+
Disc.	List -22%	On request	

Part number		Z	PCD	Internal			Boss		Price each 1 to 5	
Steel IN	Delrin ZIN	teeth	ØP	ØA	ØD	L	B	ØM	Steel IN	Delrin ZIN
Module 1.5										
IN1.5-41	ZIN1.5-41	41	61,5	58	100	15	12	94	86,73 €	62,33 €
IN1.5-60	ZIN1.5-60	60	90,0	87	150	15	12	125	133,33 €	95,90 €
IN1.5-100	ZIN1.5-100	100	150,0	147	200	15	12	175	225,72 €	173,99 €
Module 2.0										
IN2-40	ZIN2-40	40	80	76	150	15	12	125	119,74 €	83,80 €
IN2-60	ZIN2-60	60	120	116	175	15	12	150	186,56 €	130,58 €
IN2-80	ZIN2-80	80	160	156	220	15	12	200	245,54 €	171,85 €
IN2-100	ZIN2-100	100	200	196	250	15	12	220	315,84 €	221,08 €

Dimensions in mm

Our other products



PSPE20
Conical flexible shaft
handle Ø20, Black
PVC



RIMple
Locking castor, with
mounting plate



M2
Worm and wheel set,
Machined plastic
(delrin)



BAC105
Storage bin, 8mm



NCT
Square tube
connector, Fixed
angle



VEL
Self-gripping cable
strip, electric and
pneumatic cables



RFK58C
Hypoid gearbox -
Stainless steel, up to
500 Nm



RPP
Connecting plate for
RPP type timing belts,
RPP14



DTR
Chain idler sprocket,
Chain idler sprocket -
Steel



Q7
Angular contact ball
bearing, Steel



PSG05HC
Skive hobbed spur
gears - precision
range, Case hardened



PCS75K
Chain sprocket with
hardened teeth,
19.05mm (DIN12B-1)

Complementary products



IN1
Internal gear, Steel
20NCD2



ZG1
Plastic spur gear,
Machined plastic
(delrin)



CLG1
Moulded plastic spur
gear, Moulded plastic
(nylon)