

Steel or **machined** plastic

MODULE
1.25

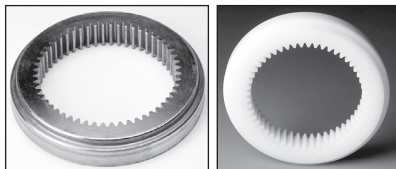

- Pressure angle 20°
- Materials:
steel 34C10 or
delrin plastic (machined parts)

Options

- Alternative number of teeth (minimum 58 teeth)
- Alternative materials (stainless steel, brass..)

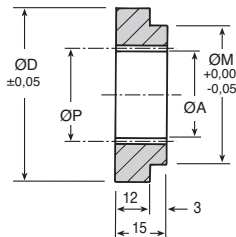
Accessories

- Spur gears with the same module eg G1.25.., ZG1.25..



IN: Steel

ZIN: Plastic



STEEL DISCOUNTS

Qty.	1+	6+	20+	40+
Disc.	List -12%	-25%	On request	

PLASTIC DISCOUNTS

Qty.	1+	6+	30+
Disc.	List -12%	-22%	On request

STEEL IN	PLASTIC ZIN	Z Teeth	PCD ØP	Part number Internal		Boss ØM	Price each 1 to 5	
				ØA	ØD		STEEL IN	PLASTIC ZIN
IN1.25-51	ZIN1.25-51	51	63,75	61,75	100	94	62,55 €	45,04 €
IN1.25-60	ZIN1.25-60	60	75,00	72,50	100	94	67,05 €	48,28 €
IN1.25-100	ZIN1.25-100	100	125,00	122,50	175	150	117,31 €	84,46 €
Gears available up to this size								
IN1,25-160	ZIN1,25-160	160	200,00	197,50	250	225	on request	on request

Dimensions in mm

Our other products



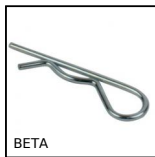
PSG1

Spur gear - precision range, Pre-hardened Steel 35NCD6



SCE

U-shaped cable clamp, Steel



BETA

Hitch pin, Hitch



RAM35

Manual bevel gearbox, Bevel



RURp

Swivel castor with double brake, Polyurethane - Aluminium rim (Free



H0

Crossed helical gear crossed axis at 90°, Steel 20NCD2



NSU

Universal 90° support clamp, Universal 90° support clamp



PRF-P

Aluminium profile feet support, For feet or casters



EML

Stainless steel hexagonal headed thumb nut, Lobed handscrew



OP3_14_06

Reducing sleeve for OP indicators, Reduction socket



FBL6000_K19

Brush strip per meter horsehair fibres Ø0.2, Black horsehair



DEP

Tools Hygienic Usit® and Hygienic Design®, Socket for mounting Hyg...

Complementary products



ZG125

Plastic spur gear, Machined plastic (delrin)