

180° ball and socket joint steel or stainless steel Stock Ste

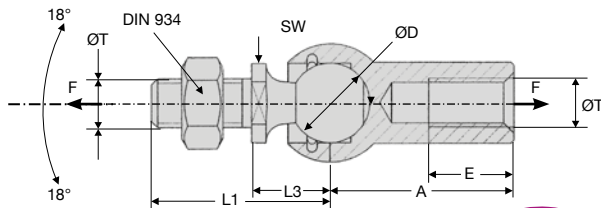
IBJ Steel/steel or stainless steel/stainless steel contact

IBJss

- In-line ball and socket joint similar to DIN 71802
- Body to DIN 71805
- Stem to DIN 71803
- Materials:
 - Zync plated steel
 - Stainless steel 1.4305 (A2 stainless steel)



Steel or
stainless steel



NEW
DISCOUNTS

DISCOUNTS **A** / steel

Qty	1+	6+	20+	40+	60+
Disc.	Price	-20%	-30%	-50%	On request

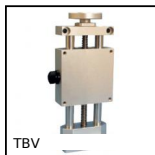
DISCOUNTS **B** / stainless steel

Qty	1+	6+	20+	40+	60+
Disc.	Price	-15%	-20%	-30%	On request

Part number	ØD	ØT	A	L1	L3	E	SW	Axial load F (N)	Weight (kg)	Stock*	Price each 1 to 5
Steel											
IBJ-5	8	M5	22	19,2	9	10,2	7	30	0,015	✓	A 5,35 €
IBJ-6	10	M6	25	23,5	11	11,5	8	40	0,025	✓	A 6,86 €
IBJ-8	13	M8	30	29,5	13	14,0	11	60	0,053	✓	A 7,25 €
IBJ-10	16	M10	35	36,0	16	15,5	13	80	0,104	✓	A 10,05 €
IBJ-14x1.5	19	M14x1,5	45	48,0	20	21,5	16	100	0,221	✓	A 25,66 €
Stainless Steel											
IBJ-5/SS	8	M5	22	19,2	9	10,2	7	30	0,015	✓	B 9,64 €
IBJ-6/SS	10	M6	25	23,5	11	11,5	8	40	0,025	✓	B 11,55 €
IBJ-8/SS	13	M8	30	29,5	13	14,0	11	60	0,055	✓	B 12,68 €
IBJ-10/SS	16	M10	35	36,0	16	15,5	13	80	0,105	-	B 20,76 €

*Depending on availability - Dimensions in mm

Our other products



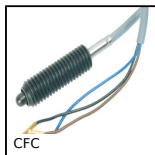
TBV
Manual lifting tables,
3kg



PRF4545
Standard stainless
steel profile, 45 x 45
mm



VDSQ
Sliding lock
adjustment system,
Sliding lock for square
profile



CFC
Spring loaded position
switch, Electric
contact



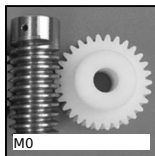
D-PAR_SS
Stainless steel
progressive stop,
stainless steel



HLC28
Right angle spiro
bevel gearbox, Up to
182Nm



VHEH
Hexagonal headed
screw with collar
Hygienic Usit®,
Stainless steel



M0
Worm and wheel set,
Machined plastic
(delrin)



DER80
Stainless steel AC
asynchronous motor



GPLSS
Brush, stainless steel



UCFL
Cast iron flanged
bearing, Cast iron



SSDB
Stainless steel bevel
gear, 2:1

Complementary products



IBJ
180° ball and socket
joints, Steel



RAS
90° ball and socket
joints DIN71802,
Stainless steel