

180° ball and socket joint steel or stainless steel

IBJ Steel/steel or stainless steel/stainless steel contact

IBJss

- In-line ball and socket joint similar to
DIN 71802

- Body to DIN 71805

- Stem to DIN 71803

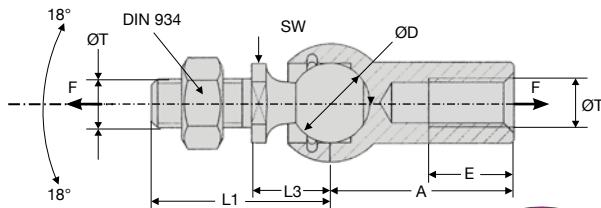
- Materials:

Zync plated steel

Stainless steel 1.4305 (A2 stainless steel)



Steel or
stainless steel



NEW
DISCOUNTS

DISCOUNTS A / steel

Qty	1+	6+	20+	40+	60+
Disc.	Price	-20%	-30%	-50%	On request

DISCOUNTS B / stainless steel

Qty	1+	6+	20+	40+	60+
Disc.	Price	-15%	-20%	-30%	On request

Part number	ØD	ØT	A	L1	L3	E	SW	Axial load F (N)	Weight (kg)	Stock*	Price each 1 to 5
Steel											
IBJ-5	8	M5	22	19,2	9	10,2	7	30	0,015	✓	A 5,35 €
IBJ-6	10	M6	25	23,5	11	11,5	8	40	0,025	✓	A 6,86 €
IBJ-8	13	M8	30	29,5	13	14,0	11	60	0,053	✓	A 7,25 €
IBJ-10	16	M10	35	36,0	16	15,5	13	80	0,104	✓	A 10,05 €
IBJ-14x1.5	19	M14x1,5	45	48,0	20	21,5	16	100	0,221	✓	A 25,66 €
Stainless Steel											
IBJ-5/SS	8	M5	22	19,2	9	10,2	7	30	0,015	✓	B 9,64 €
IBJ-6/SS	10	M6	25	23,5	11	11,5	8	40	0,025	✓	B 11,55 €
IBJ-8/SS	13	M8	30	29,5	13	14,0	11	60	0,055	✓	B 12,68 €
IBJ-10/SS	16	M10	35	36,0	16	15,5	13	80	0,105	-	B 20,76 €

*Depending on availability - Dimensions in mm

Our other products



M0

Worm and wheel set,
Bronze



VTA

Vari-Tork® slip
friction clutch, 0.53 to
1.32 Nm



SVT5

Screwjack with
travelling screw, with
translating screw



G4-ECO

Eco range Spur gear,
Steel C45



BOX-INS-W

Box set of self tapping
inserts, Boxed set -
For wood



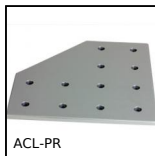
PO

Pull handle - Multi-
sector, Tapped
recessed insert



CHAR7530

Spring hinge, welded



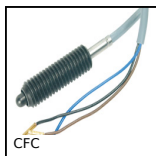
ACL-PR

Joining plate for
aluminium profile,
Right angled
connection



TCLar

Automatic chain
tensioner, With wide
guide



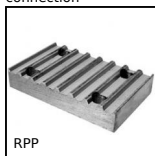
CFC

Spring loaded position
switch, Electric
recessed contact



M0

Worm and wheel set,
Machined plastic
(delrin)



RPP

Connecting plate for
RPP type timing belts,
RRP5

Complementary products



IBJ

180° ball and socket
joints, Steel



RAS

90° ball and socket
joints DIN71802,
Stainless steel