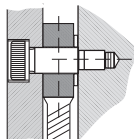
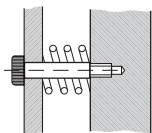
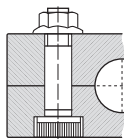
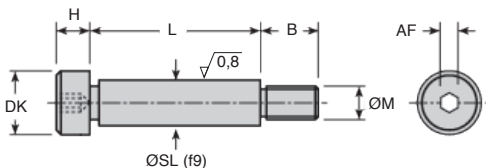


HSSs

A2 stainless steel

- **Centering and clamping function**
- Ground shoulder, tolerance f_9
- Material:
stainless steel A2



Part number	Thread		L	ØSL			H	AF	Qty per box	Price each	
	ØM	Pas		(f9)	B	DK				1 to 5	
HSS5-10/SS/B	M5	0,80	10	6	9,50	10,22	4,5	3	10	45,85 €	
HSS5-12/SS/B	M5	0,80	12	6	9,50	10,22	4,5	3	10	45,96 €	
HSS5-16/SS/B	M5	0,80	16	6	9,50	10,22	4,5	3	10	47,66 €	
HSS5-20/SS/B	M5	0,80	20	6	9,50	10,22	4,5	3	10	53,64 €	
HSS5-25/SS/B	M5	0,80	25	6	9,50	10,22	4,5	3	10	62,09 €	
HSS5-30/SS/B	M5	0,80	30	6	9,50	10,22	4,5	3	10	64,44 €	
HSS5-40/SS/B	M5	0,80	40	6	9,50	10,22	4,5	3	10	70,65 €	

Dimensions in mm

Part number	Thread		ØSL						Qty per box	Price each 1 to 5
	ØM	Pas	L	(f9)	B	DK	H	AF		
HSS6-12/SS/B	M6	1,00	12	8	11,00	13,27	5,5	4	10	55,09 €
HSS6-16/SS/B	M6	1,00	16	8	11,00	13,27	5,5	4	10	54,07 €
HSS6-20/SS/B	M6	1,00	20	8	11,00	13,27	5,5	4	10	62,47 €
HSS6-25/SS/B	M6	1,00	25	8	11,00	13,27	5,5	4	10	68,48 €
HSS6-30/SS/B	M6	1,00	30	8	11,00	13,27	5,5	4	10	69,31 €
HSS6-40/SS/B	M6	1,00	40	8	11,00	13,27	5,5	4	10	73,66 €
HSS6-50/SS/B	M6	1,00	50	8	11,00	13,27	5,5	4	10	83,27 €
HSS8-16/SS/B	M8	1,25	16	10	13,00	16,27	7	5	10	58,00 €
HSS8-20/SS/B	M8	1,25	20	10	13,00	16,27	7	5	10	61,12 €
HSS8-25/SS/B	M8	1,25	25	10	13,00	16,27	7	5	10	67,07 €
HSS8-30/SS/B	M8	1,25	30	10	13,00	16,27	7	5	10	83,22 €
HSS8-40/SS/B	M8	1,25	40	10	13,00	16,27	7	5	10	76,92 €
HSS8-50/SS/B	M8	1,25	50	10	13,00	16,27	7	5	10	86,15 €
HSS8-60/SS/B	M8	1,25	60	10	13,00	16,27	7	5	10	94,95 €
HSS8-70/SS/B	M8	1,25	70	10	13,00	16,27	7	5	10	115,64 €
HSS8-80/SS/B	M8	1,25	80	10	13,00	16,27	7	5	10	109,79 €
HSS10-16/SS/B	M10	1,50	16	12	16,00	18,27	9	6	5	45,46 €
HSS10-20/SS/B	M10	1,50	20	12	16,00	18,27	9	6	5	50,67 €
HSS10-25/SS/B	M10	1,50	25	12	16,00	18,27	9	6	5	48,66 €
HSS10-30/SS/B	M10	1,50	30	12	16,00	18,27	9	6	5	53,62 €
HSS10-40/SS/B	M10	1,50	40	12	16,00	18,27	9	6	5	55,83 €
HSS10-50/SS/B	M10	1,50	50	12	16,00	18,27	9	6	5	58,49 €
HSS10-60/SS/B	M10	1,50	60	12	16,00	18,27	9	6	5	61,40 €
HSS10-70/SS/B	M10	1,50	70	12	16,00	18,27	9	6	5	72,66 €
HSS10-80/SS/B	M10	1,50	80	12	16,00	18,27	9	6	5	68,81 €
HSS10-100/SS/B	M10	1,50	100	12	16,00	18,27	9	6	5	136,06 €
HSS12-30/SS/B	M12	1,75	30	16	18,00	24,33	11	8	5	89,48 €
HSS12-40/SS/B	M12	1,75	40	16	18,00	24,33	11	8	5	89,39 €
HSS12-50/SS/B	M12	1,75	50	16	18,00	24,33	11	8	5	124,13 €
HSS12-60/SS/B	M12	1,75	60	16	18,00	24,33	11	8	5	151,32 €
HSS12-70/SS/B	M12	1,75	70	16	18,00	24,33	11	8	5	121,47 €
HSS12-80/SS/B	M12	1,75	80	16	18,00	24,33	11	8	5	277,97 €
HSS12-100/SS/B	M12	1,75	100	16	18,00	24,33	11	8	5	179,57 €
HSS16-40/SS/B	M16	2,00	40	20	22,00	30,33	14	10	3	123,79 €
HSS16-50/SS/B	M16	2,00	50	20	22,00	30,33	14	10	3	182,37 €
HSS16-60/SS/B	M16	2,00	60	20	22,00	30,33	14	10	3	148,46 €
HSS16-70/SS/B	M16	2,00	70	20	22,00	30,33	14	10	3	166,80 €
HSS16-80/SS/B	M16	2,00	80	20	22,00	30,33	14	10	3	211,26 €

Dimensions in mm

Our other products



DOMI_MD

Domino rotary table,
40/1



MRASSeco

Low cost stainless
steel quick link,
Stainless steel



CHML40

Worm and wheel gear
reducer, up to 57 Nm
- Integrated torque
limiter



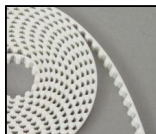
ZBconique

Machined plastic
bevel gear, 1:1



GMK17_BR

Clamp for guiding
profile, Rounded only
- double



TSM T10M

T type timing belt per
metre, T10 Steel
cored polyurethane



RFKfp

Stainless steel
gearbox - accessories,
Mounting bracket



BABreglable

Adjustable ball pin
hardened stainless
steel, adjustable



PTMC

Telescopic furniture
foot, square plate



SH0

Parallel axis helical
gear, Machined plastic



CSS

Spherical bushing,
Steel / self lubricating



CHAGC-AL

Screw-in garnet
hinge, Screw-on

Complementary products



SHSS

Shoulder screw
stainless steel 416,
Pre-treated 416
stainless steel



SHS

Shoulder screw
stainless steel 303,
Stainless steel 303



HSS

Shoulder screw
ISO7379, Hardened
Steel class 12.9



SHN

Hexagonal nut
DIN934, A2 Stainless
steel