

# Right angle gearbox

Torque up to 78 Nm

HLC24

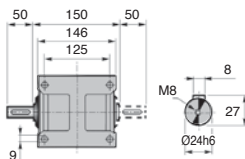
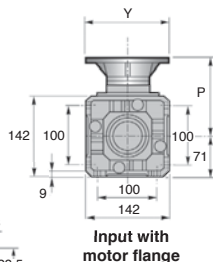
- **Right angle bevel gearbox**
- Max speed 1,400 rpm
- Output backlash: 12' to 20'
- Materials:
  - Components: steel
  - Case: cast iron
- Thermal power: 6.7 kW (Heat dissipation capability)

## Part number

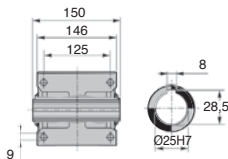
- When ordering, specify the rotation direction and mounting position by replacing **E** and **B3** in the Part number (see presentation page)

## Input flange

- The following flanges are available: 63B5, 71B5, 80B5, 90B5 and 80B14 and the reference should be added to the Part number



Single output shaft S  
or dual shafts B



Hollow output shaft C

## Input flange

IEC	71B5	80B5	90B5	100/112B5
Y	160	200	200	250
P	128	148	148	158

## DISCOUNTS

Qty	1+	2+	4+
Disc.	List	-5%	On request

Part number	Ratio	Output shaft	Max output speed (rpm)	Mechanical output torque* (Nm)	Weight (kg)	Price each
HLC24-1-C-71B5-E-B3	1:1	hollow	1400	73	19	633,21 €
HLC24-2-C-71B5-E-B3	2:1	hollow	700	72	19	633,21 €
HLC24-3-C-71B5-E-B3	3:1	hollow	467	78	19	633,21 €
HLC24-1-S-71B5-E-B3	1:1	single	1400	73	19	599,42 €
HLC24-2-S-71B5-E-B3	2:1	single	700	72	19	599,42 €
HLC24-3-S-71B5-E-B3	3:1	single	467	78	19	599,42 €
HLC24-1-B-71B5-E-B3	1:1	dual	1400	73	19	649,47 €
HLC24-2-B-71B5-E-B3	2:1	dual	700	72	19	649,47 €
HLC24-3-B-71B5-E-B3	3:1	dual	467	78	19	649,47 €

\*For maximum torque and a service factor applied, see presentation page - Dimensions in mm

## Our other products



PLM-205C

Cylindrical magnet,  
Cylindrical magnet



SER69K-CLE

Quarter turn latch for  
the food industry,  
Stainless steel key



J64

Spur gear coaxial  
gearbox, from 0.57 to  
2.25 Nm - In-line



WBGV

Lifting ring, Threaded



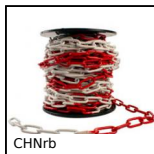
WINGbrEcrou

Manually tightened  
wing nut DIN315,  
Brass DIN 315



PCF2

Conical flexible  
mount, Oval base  
plate



CHNrb

Warning chain with  
red and white links,  
Steel



SDB

Locking bolt support  
bracket, Mounting  
holes at 90° to  
locating bolt



ZG3

Plastic spur gear,  
Machined plastic  
(delrin)



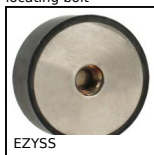
PCS37

Chain sprocket - steel,  
9.525mm (DIN06B-1)



AC144

Strike for toggle latch,  
22mm



EZYSS

Stainless steel  
cylindrical stop,  
stainless steel

## Complementary products



HLC28

Right angle spiro  
bevel gearbox, Up to  
182Nm



HLA24

Right angle spiro  
bevel gearbox, Up to  
78Nm