

Manual locking clamp



HK

For **IKO**® LWL guide rail

- For IKO LWL7 to LWL25 rails
- Simple, solid construction
- Contact surfaces held in floating position
- Precise positioning
- Gripping force up to 300N

Applications

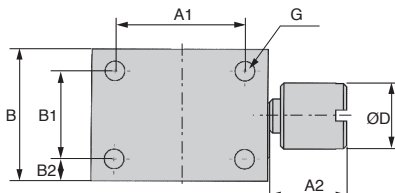
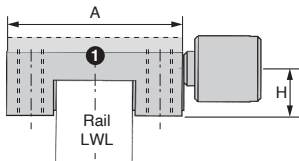
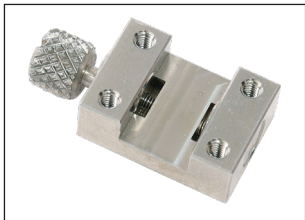
- Pick and place machines
- Measuring systems
- Mounting accessories

Operating principle

- Tightening screw

Info.

- This product is not available for LWL5 rail
- ① Adaptor plate (to do by yourself)



DISCOUNTS

Qty	1+	2+	4+
Disc.	List	-10%	On request

Part number	For rail	Holding		Tightening							Weight (g)	G	ØD	H	Price each
		force (N)	torque (Nm)	A	A1	A2	B	B1	B2						
HK0700M	LWL7	65	0,15	17	12	7	12	8	2	8	M2	6	4,30	195,32	€
HK0900M	LWL9	100	0,24	20	15	9	17	11	3	16	M3	8	5,35	253,62	€
HK1200M	LWL12	150	0,50	27	20	10	19	13	3	31	M3	10	7,15	267,72	€
HK1500M	LWL15	180	1,02	32	25	14	20	14	3	50	M3	12	8,05	280,05	€
HK2000M	LWL20	220	1,30	46	38	14	26	19	3,5	120	M4	14	9,60	New	
HK2500M	LWL25	300	2,50	48	35	16	35	24	5,5	200	M6	16	14,90	New	

Dimensions in mm



Manual locking clamp

For **IKO**® LWH guide rail

HK

- For IKO LWH15 to LWH45 rails
- Simple, solid construction
- Contact surfaces held in floating position
- Precise positioning
- Gripping force up to 2000N

Applications

- Pick and place machines
- Measuring systems
- Mounting accessories

Operating principle

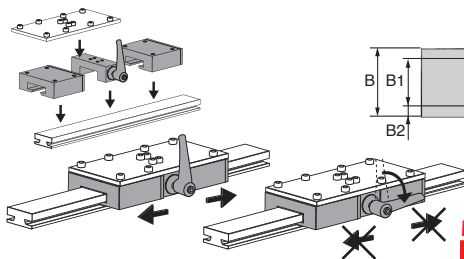
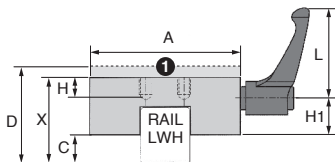
- With indexing handle

Info.

- Attention : Dimension C must be respected
- Adaptor plate (optional accessory)
- X Operating height
- ① D Mounting height of linear rail (inc adaptor plate if applicable)



Sizes in stock



DISCOUNTS

Qty	1+	2+	4+
Disc.	List	-10%	On request

Part number	For rail	Holding force		Tightening torque													Price each
		(N)	(Nm)	A	A1	A2	A3	B	B1	B2	C	X	G	L	H	H1	
HK1501A	LWH15	1200	5	47	17	33,5	30,5	25	17	4,0	6,5	24	M4	44	5	12,5	184,67 €
HK2001A	LWH20	1200	7	60	15	41,5	38,5	24	15	4,5	10	30	M5	63	6	13,0	194,62 €
HK2501A	LWH25	1200	7	70	20	41,5	38,5	30	20	5,0	12	36	M6	63	8	15,0	200,73 €
HK3001A	LWH30	2000	15	90	22	50,5	46,5	39	22	8,5	12	42	M6	78	8	21,5	209,80 €
HK3501A	LWH35	2000	15	100	24	50,5	46,5	39	24	7,5	16	48	M8	78	10	21,5	215,94 €
HK4501A	LWH45	2000	15	120	26	50,5	46,5	44	26	9,0	18	60	M10	78	14	26,5	235,65 €

Dimensions in mm

Manual locking clamp



HK

For IKO® LRX rail

- For IKO LRX15-LRX45 rails
- Simple, solid construction
- Contact surfaces held in floating position
- Precise positioning
- Gripping force up to 2000N

Applications

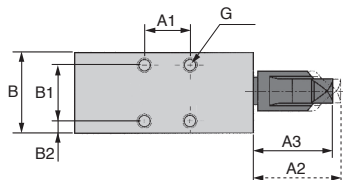
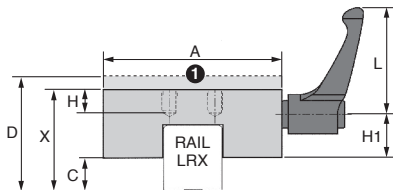
- Pick and place machines
- Measuring systems
- Mounting accessories

Operating principle

- With indexing handle

Info.

- Attention : Dimension C must be respected
- ① Adaptor plate (optional accessory)
- X Operating height
- D Mounting height of linear rail (inc adaptor plate if applicable)
- Product not suitable for LRX25 or LRX30 rails



DISCOUNTS

Qty	1+	2+	4+
Disc.	List	-10%	On request

Part number	For rail	Holding force (N)	(Nm)	Tightening torque															
				A	A1	A2	A3	B	B1	B2	C	X	G	L	H	H1	Price each		
HK1510B	LRX15	1200	7	47	38	33,5	30,5	29	20	4,5	6,5	24	M5	44	6	13,4	229,18 €		
HK2010B	LRX20	1200	5	60	15	33,5	30,5	24	15	4,5	7	30	M5	44	6	17,5	250,84 €		
HK3501A	LRX35	2000	15	100	24	50,5	46,5	39	24	7,5	16	48	M8	78	10	21,5	215,94 €		
HK4501A	LRX45	2000	15	120	26	50,5	46,5	44	26	9	18	60	M10	78	14	26,5	235,65 €		

Dimensions in mm

HPC

WEB
04/2020

www.hpceurope.com



Manual locking clamp

For Drylin® T guide rail

HK

- For Drylin® T TS-01-15 to TS-01-30 rails
- Gripping force up to 500N
- With indexing handle

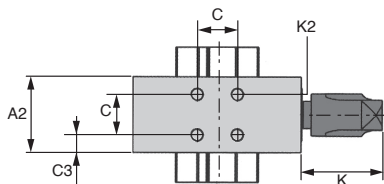
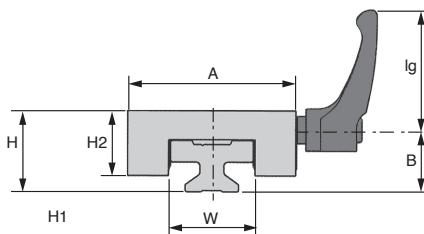
Advantages

- Simple, solid construction
- Contact surfaces held in floating position
- Precise positioning

Applications

- Pick and place machines
- Measuring systems
- Mounting accessories

Sizes in stock



DISCOUNTS

Qty	1+	2+	4+
Disc.	List	-10%	On request

Part number	rail	For										Price each	
		A	W	A2	H	H2	K	K2	C	C3	lg		B
HK1511A	TS01-15	47	22	23	24	20,0	30	M4x5	15	4,0	44,00	18,9	195,73 €
HK2011A	TS01-20	63	31	28	30	24,0	30	M5x6	15	6,5	44,00	23,0	211,17 €
HK2511A	TS01-25	70	34	35	36	31,0	39	M6x8	20	7,5	63,63	26,2	212,90 €
HK3011A	TS01-30	90	40	38	42	35,5	47	M6x8	20	9,0	78,00	32,4	218,50 €

Dimensions in mm

Our other products



WFRM

Flanged polymer nut,
Polymer (Iglidur®) - 1
thread



Q3

Double row angular
contact ball bearing,
Angular contact -
Steel



RCC_RCX

Spherical tilt washer -
DIN6319, convex



PRF_GAL

Roller for aluminium
profile, Fixing kit for
roller eccentric



SLBS

Stainless steel
indexing plunger,
Stainless steel



ZDB

Machined plastic
bevel gear, 2:1



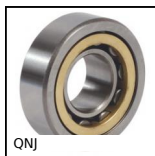
PSEC

Security pull handle,
Thermoplastic



CHAR7520

Spring hinge, screwed



QNJ

Single row cylindrical
roller bearing, Single



RT25ss

Self-centering flanged
locking assembly,



R204

Die spring ISO10243,
Average



G-ECO

Eco range Spur gear,
Steel C45

Complementary products



LWL

Linear ball slide -
Stainless steel balls,
Chariot - from 514 N
to 1...



LWL

Linear ball slide -
Stainless steel balls,
Rail - from 514 N to
1670...