

# Single needle roller universal joint

## H Industrial range

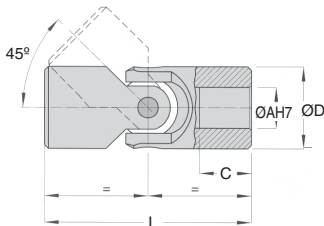
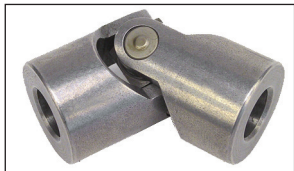
- **Standard series**
- **Needle bearings**
- Suitable for speeds up to 4000 rpm
- Max. misalignment angle 45°
- **Materials:**  
Body: C45 steel  
Pin: Hardened steel 18NCD4

### Uses

- High speed applications

### Accessories

- Optional rubber cover



### Modifiable bore



High speed applications

Angle	Factor
5°	1,25
10°	1,00
20°	0,75
30°	0,45
40°	0,30

### Effect of operating angle

The torques below are given for a 10° angle. For other angles, the appropriate factor from this table should be applied. E.g. For 100Nm to be transmitted at 20°, the corrected value of torque becomes  $100/0.75 = 133$  Nm and a joint should be chosen that can transmit 133Nm at the required speed.

### DISCOUNTS

Qty	1+	2+	4+
Disc.	List	-6%	On request

Part number	ØD	ØA	C	L	Torque (Nm)						Stock*	Price each
					at 250 rpm	at 500 rpm	at 1000 at 2000 rpm	at 3000 rpm	at 4000 rpm			
H02-A-8/8	16	8	15	52	-	-	-	6,9	-	-	✓	55,03 €
H03-A-10/10	20	10	18	62	26,4	20,4	16,8	13,2	12,0	10,8	✓	49,52 €
H05-A-14/14	25	14	20	74	40,8	34,8	28,8	26,4	24,0	21,6	✓	49,52 €
H1-A-16/16	32	16	24	86	78,0	66,0	54,0	48,0	44,4	38,4	✓	55,03 €
H2-A-18/18	37	18	17	72	90,0	73,2	60,0	54,0	48,0	43,2	✓	57,91 €
H3-A-20/20	40	20	30	108	168,0	144,0	120,0	96,0	84,0	78,0	✓	66,06 €
H4-A-22/22	47	22	22	95	194,4	158,4	129,6	105,6	92,4	85,2	-	76,86 €
H5-A-25/25	50	25	38	132	240,0	204,0	156,0	132,0	108,0	102,0	✓	85,32 €
H6-A-30/30	63	30	45	166	360,0	324,0	276,0	228,0	192,0	168,0	-	109,87 €
H61-A-32/32	63	32	45	166	360,0	324,0	276,0	228,0	192,0	168,0	-	102,34 €
H7-A-35/35	70	35	35	140	391,2	332,4	284,4	237,6	201,6	-	-	185,22 €
H8-A-40/40	80	40	50	180	438,0	363,6	306,0	246,0	223,2	-	-	255,02 €
H9-A-50/50	95	50	54	190	482,4	402,0	330,0	270,0	237,6	-	-	357,36 €

\*Depending on availability - Dimensions in mm



# Double needle roller universal joint

## Industrial range

## HD

- **Standard series**
- **Needle bearings**
- Suitable for speeds up to 4000 rpm
- Max. misalignment angle 45°
- **Materials:**
  - Body: C45 steel
  - Pin: Hardened steel 18NCD4



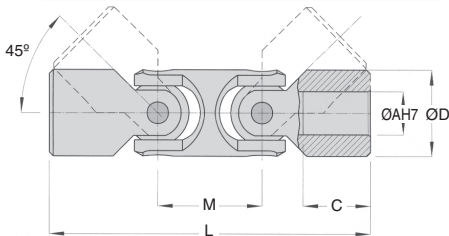
### Uses

- High speed applications

### Accessories

- Optional rubber cover

### Modifiable bore



Angle	Factor
5°	1,25
10°	1,00
20°	0,75
30°	0,45
40°	0,30

### Effect of operating angle

The torques below are given for a 10° angle. For other angles, the appropriate factor from this table should be applied. E.g. For 100Nm to be transmitted at 20°, the corrected value of torque becomes  $100/0.75 = 133 \text{ Nm}$  and a joint should be chosen that can transmit 133Nm at the required speed.

**High speed applications**

### DISCOUNTS

Qty	1+	2+	4+
Disc.	List	-6%	On request

	ØD	ØA	C	M	L	Torque (Nm)				Price each			
						at 250 rpm	at 500 rpm	at 1000 rpm	at 2000 rpm		at 3000 rpm	at 4000 rpm	
HD03-A-10/10	20	10	18	26	88	26,4	20,4	16,8	13,2	12,0	10,8	✓	148,71 €
HD05-A-14/14	25	14	19	33	104	40,8	34,8	28,8	26,4	24,0	21,6	✓	116,63 €
HD1-A-16/16	32	16	24	39	125	78,0	66,0	54,0	48,0	44,4	38,4	✓	116,63 €
HD3-A-20/20	40	20	30	48	156	168,0	144,0	120,0	96,0	84,0	78,0	✓	157,41 €
HD5-A-25/25	50	25	37	59	188	240,0	204,0	156,0	132,0	108,0	102,0	✓	187,42 €
HD6-A-30/30	63	30	41	80	238	360,0	324,0	276,0	228,0	192,0	168,0	✓	211,71 €
HD61-A-32/32	63	32	41	80	238	360,0	324,0	276,0	228,0	192,0	168,0		197,19 €
HD7-A-35/35	70	35	30	78	212	391,2	332,4	284,4	237,6	201,6	-		392,42 €
HD8-A-40/40	80	40	48	120	290	438,0	363,6	306,0	246,0	223,2	-		632,98 €
HD9-A-50/50	95	50	50	120	290	482,4	402,0	330,0	270,0	237,6	-		738,44 €

Dimensions in mm

## Our other products



INO

Internal gear, Steel  
20NCD2



PRF4545

Standard stainless  
steel profile, 45 x 45  
mm



CHTRB

Single and dual  
output gearboxes, Up  
to 53,1 Nm



SH2

Parallel axis helical  
gear, Steel 20NCD2



BPH

Ball transfer unit plain  
fit, High



BH02

Single housed bearing  
assembly, Bearing  
secured with circlips



PM3

Worm and wheel set,  
Hardened steel



RJUM01

Closed polymer  
Drylin® R bearing,  
Drylin® R



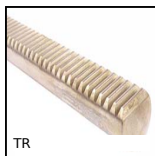
PTMC

Telescopic furniture  
foot, square plate



T39\_T49

Extension spring in  
metre length stainless  
steel, by the metre



TR

Spur round rack,  
Stainless steel -  
module 0,25-1,5



MET

Cylindrical sintered  
bronze bush, Self-  
lubricating sintered  
bronze

## Complementary products



M

Bellows cover,  
Accessory:



H02

Single needle roller  
universal joint, Heavy  
duty



HDSS

Needle roller double  
universal joint -  
Stainless steel, Heavy  
duty



H02SS

Needle roller universal  
joint - Stainless steel,  
Heavy duty  
DIN808-7...